

# ACO HexDrain®



- ACO HexDrain® high quality, high strength domestic channel with plastic or galvanised steel gratings.
- Internal width 95mm. Channels manufactured using recycled polypropylene.
- Applications: Garage threshold, pedestrian precincts, block paving, patios and paths



## Features

Choice of 'Complete the Look' gratings suitable for domestic applications

Microgrip grating surface finish, provides increased grip for pedestrians (black plastic grating only)

CE marked and fully certified to Load Class A 15 BS EN 1433:2002

Easy fit endcap for both male and female connections

Anti-splay and anti-shunt features for improved performance under trafficked conditions



Choice of eight vertical outlet positions on every channel

Installation guide clearly marked on the underside of the channel

Cutting guide to create half metre channels

Channels clip together for quick and easy on-site fabrication

*COMPLETE THE LOOK*  
For more information on the ACO Complete The Look gratings please see page 12

Product Code	Description	Length [mm]	Width Overall [mm]	Depth Overall [mm]	Invert [mm]	Weight [kg]	Pack Quantity	Price [£]
--------------	-------------	-------------	--------------------	--------------------	-------------	-------------	---------------	-----------

### ACO HexDrain® channel assemblies

19310	Channel with black plastic grating 1m	1000	129	80	75	1.40	117	25.05
19313	Channel with galvanised steel grating 1m	1000	129	80	75	1.90	117	31.35

### ACO HexDrain® accessories

19559	Corner unit with black plastic grating and vertical outlet	125	125	125	75	0.20	10	28.15
19558	Black plastic sump unit †	174	Ø118	250	-	0.30	10	43.20
319288	Black plastic end cap	6	129	97	-	0.03	20	4.60
319289	Black plastic outlet end cap Ø110mm	-	129	135	-	0.07	8	12.70
19287	Accessory bag*	-	-	-	-	0.20	15	13.70
27123	Downpipe connector, HexDrain □65mm	142	133	48	-	0.89	1	26.60
27120	Downpipe connector, HexDrain Ø68mm	142	133	48	-	0.92	1	26.60



Corner unit with black plastic grating and Ø110mm vertical outlet



Sump unit



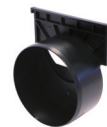
Closing end cap



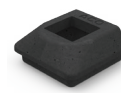
Ø110mm outlet connector



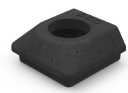
Leafguard



Ø110mm outlet end cap



Downpipe connector □65mm



Downpipe connector Ø68mm

A 15 products are tested to a loading of 1.5 tonnes. No A 15 products are suitable for trafficking by heavy domestic vehicles such as 4x4s or SUVs.

† Sump unit Ø110mm outlet spigot invert height from F.G.L = 285mm. Sump unit should be purchased with either corner unit c/w vertical outlet (Product code 19559) or the accessory bag containing the vertical outlet connector (Product code 19287).

\* Accessory bag consists of ACO HexDrain' closing end cap (x2), ACO HexDrain' outlet connector, ACO HexDrain' leafguard and instruction document.