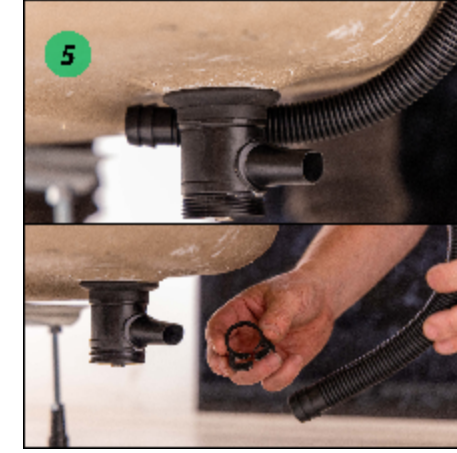




Top Fix Waste Instructions

PATENTED ✓
TOP-FIX
 WASTES & FIXINGS



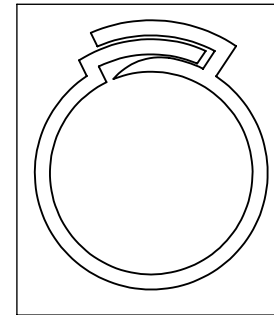
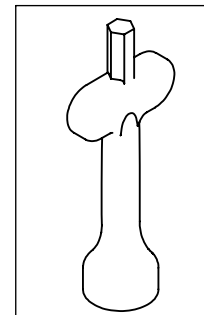
1. Push the overflow through the hole as shown and tighten using the fitting like shown. (Img 1 + 2)

3. Drop the main waste through the outlet using the tool provided tighten the fitting as shown. (Img 5 + 6)

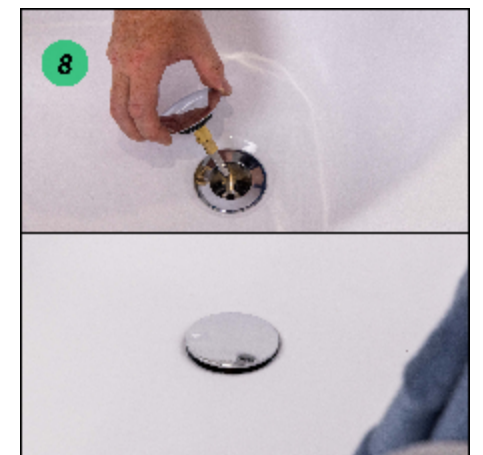
Thank you for buying our patented product, we hope you will enjoy the easy installation.

Recommended items for installation:

1x 14mm Socket Tool (Supplied)
 1x Overflow Clip



2. Connect the overflow as shown and place the clip over the pipe as shown. (Img 3 + 4)



4. Insert the covers to finish the install. (Img 7 + 8)

Recommendation: Fit the waste prior to any pipework, ensuring the waste remains central/in alignment with the hole.

After completing the waste pipework ensure the waste hasn't moved prior to wet testing.



CAUTION: IF A POWER DRILL IS USED DO NOT EXCEED TORQUE SETTING 10

TORQUE SETTINGS MAY VARY AS PER BRAND.

FITS ACRYLIC AND STEEL BATHS