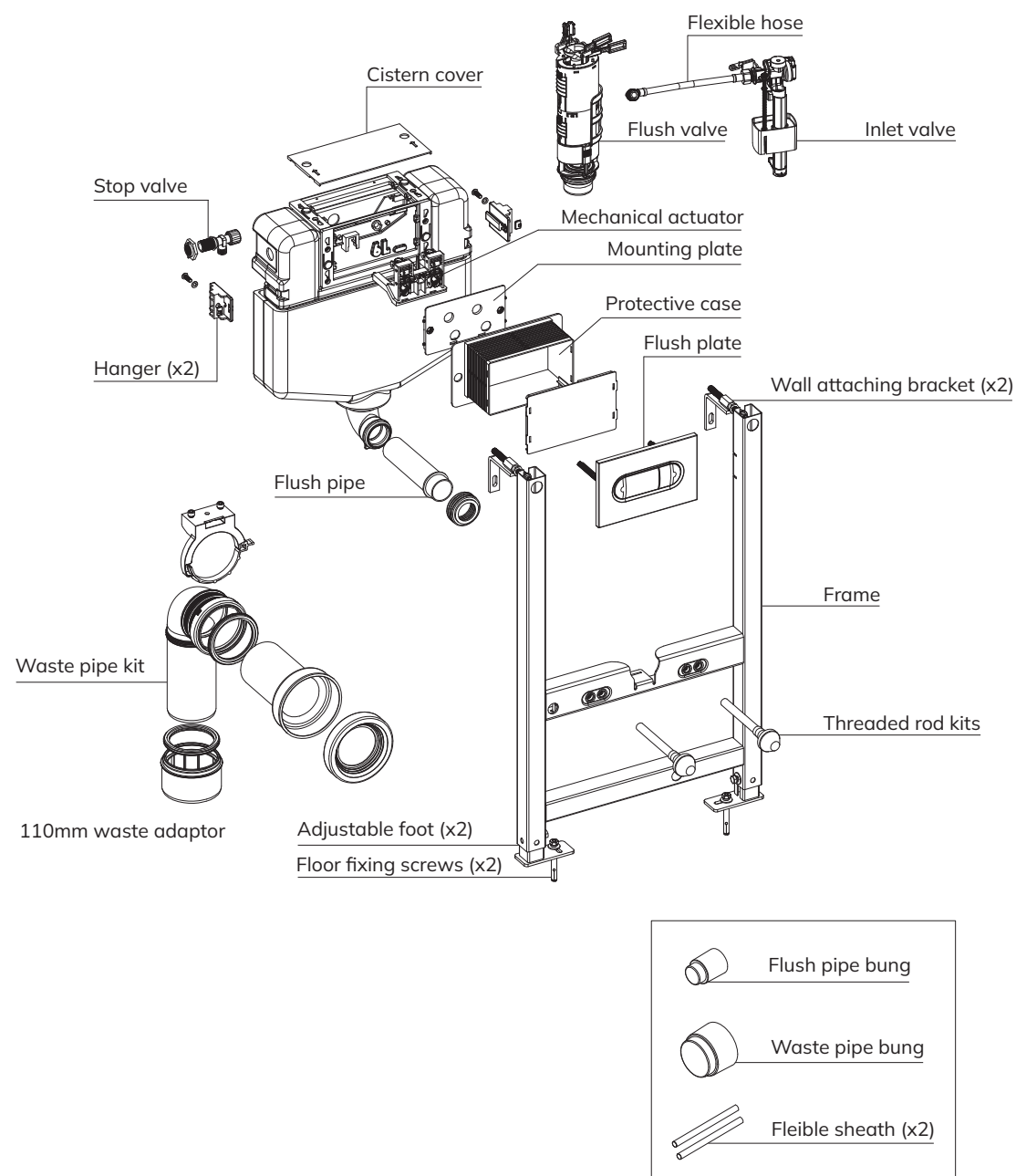
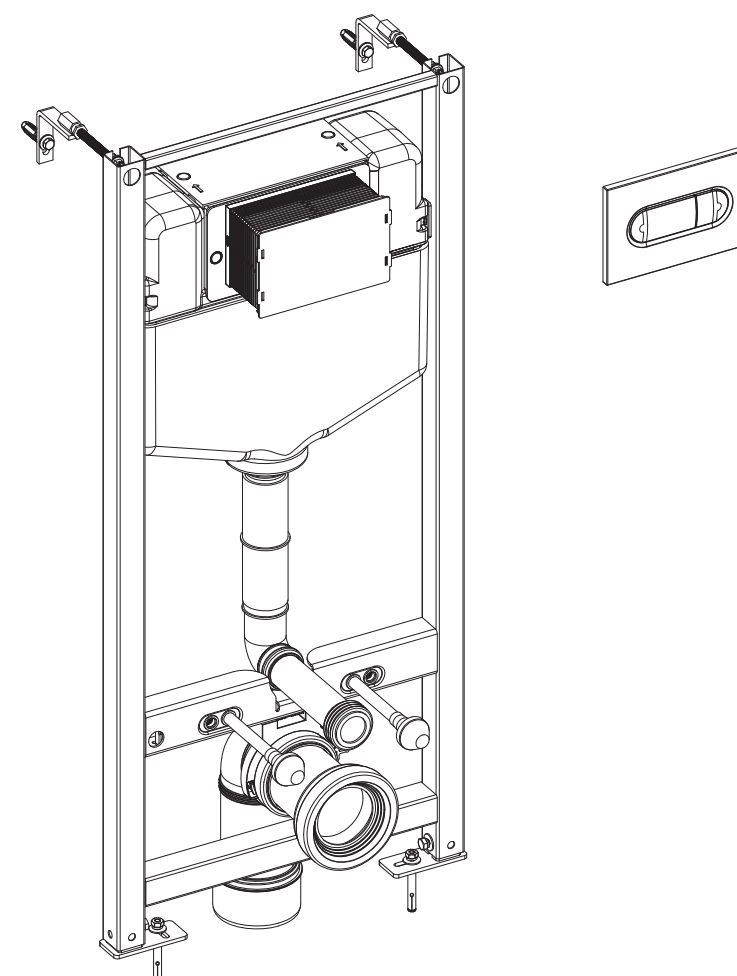


## Spare Parts

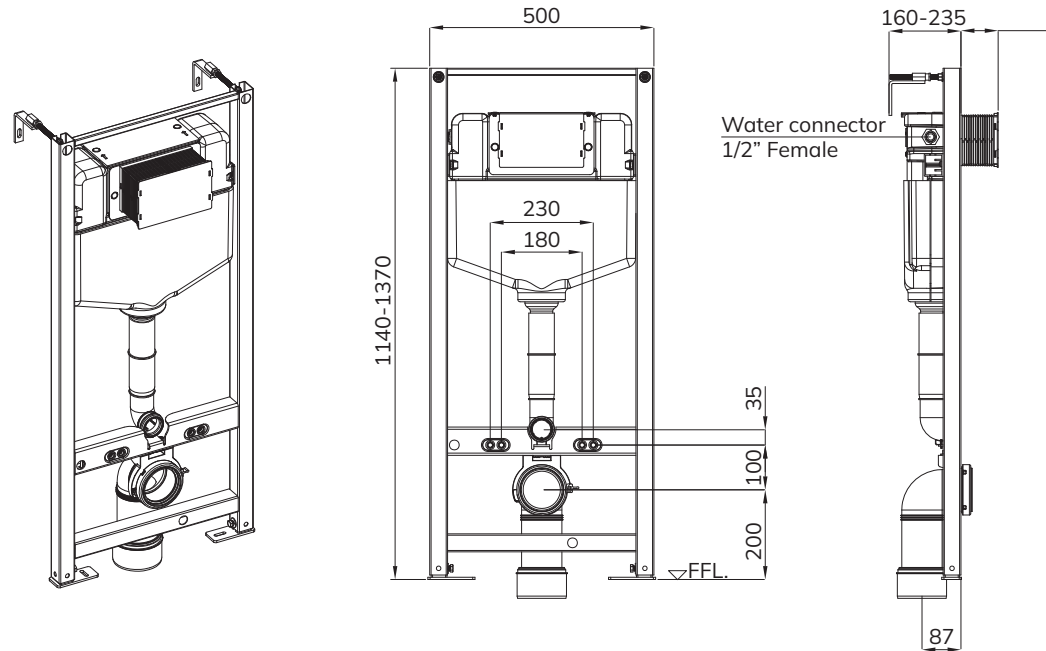


## SONAS 1160MM UNIVERSAL FRAME AND CISTERN FOR WALL HUNG WC

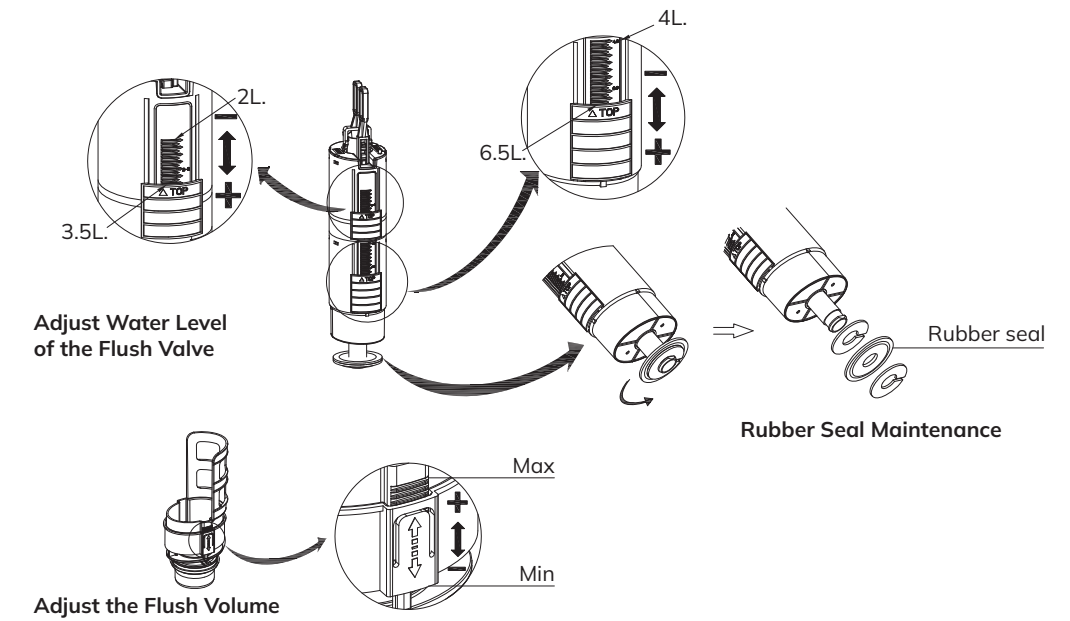
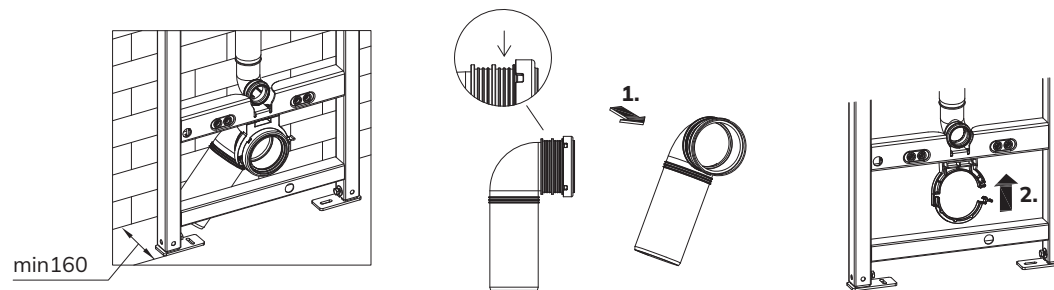


USW0548

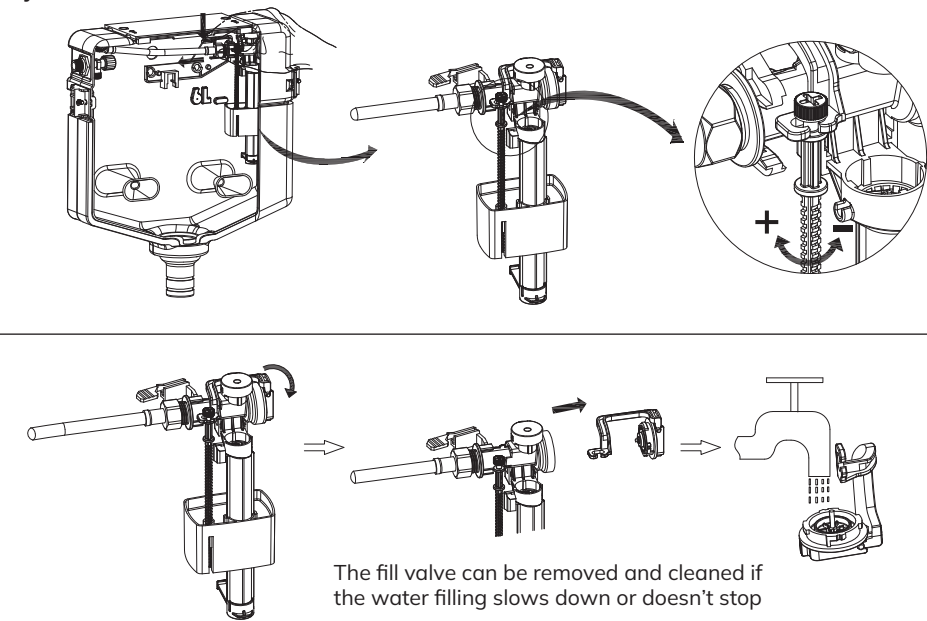
## Dimensions (mm)



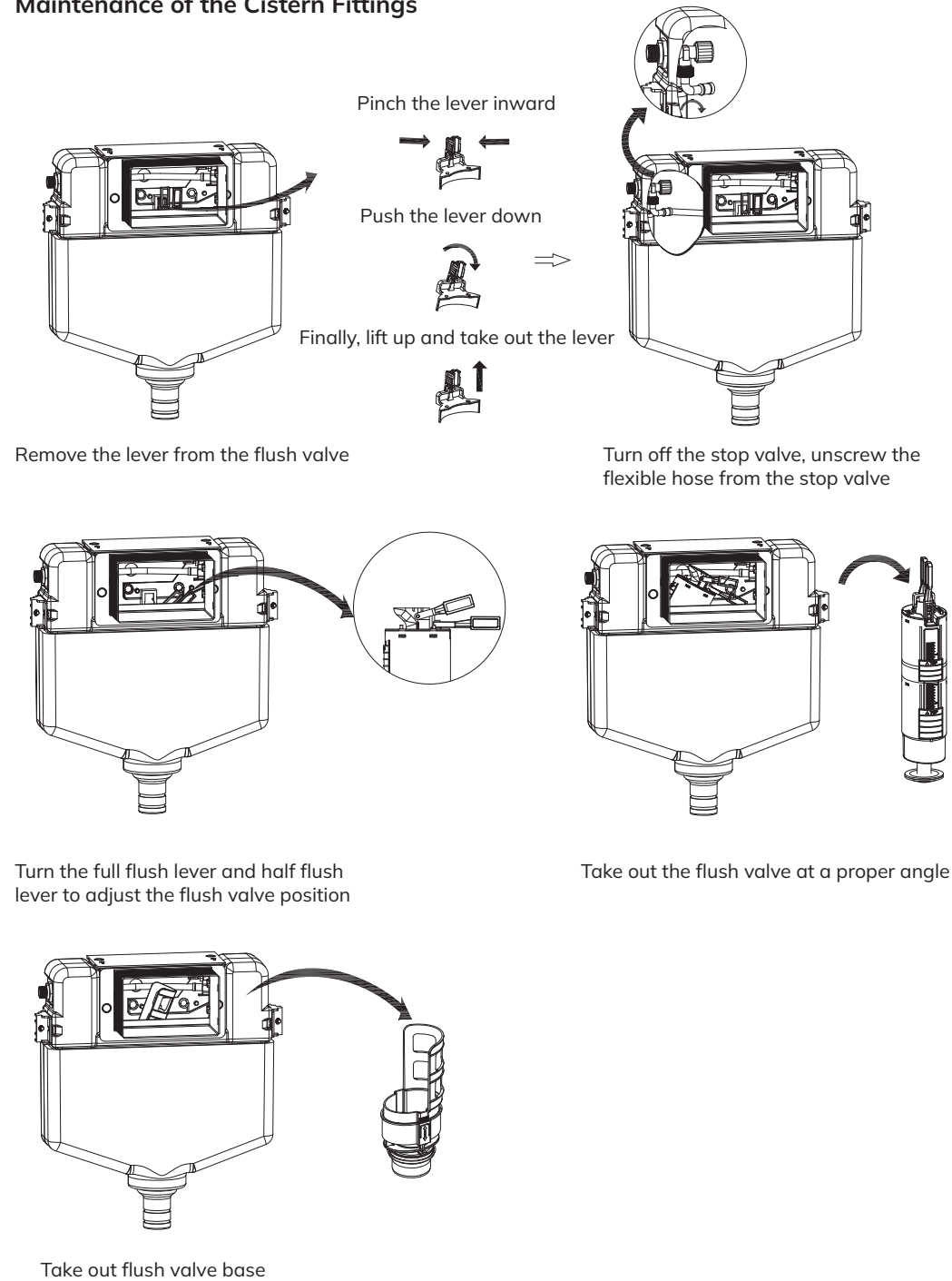
## Installation of Waste Pipe



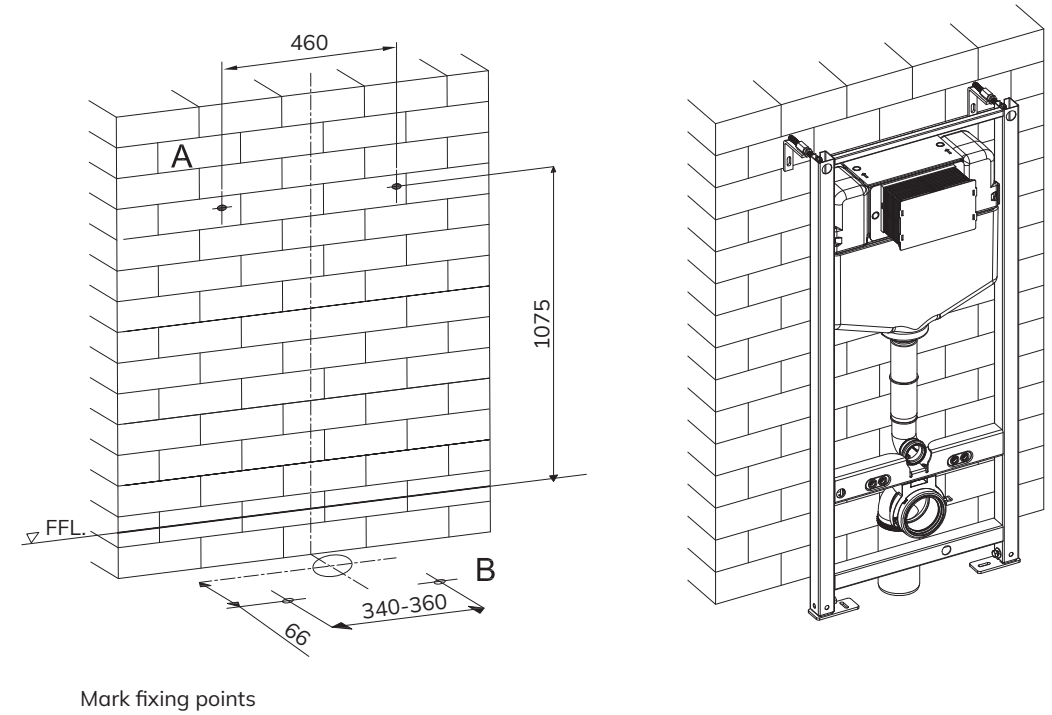
## Adjust the Water Level



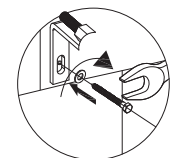
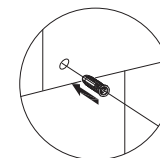
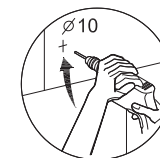
## Maintenance of the Cistern Fittings



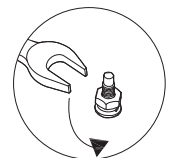
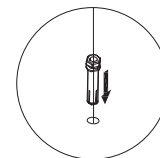
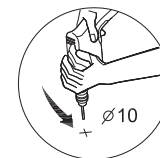
## Installation of Wall-hung Frame



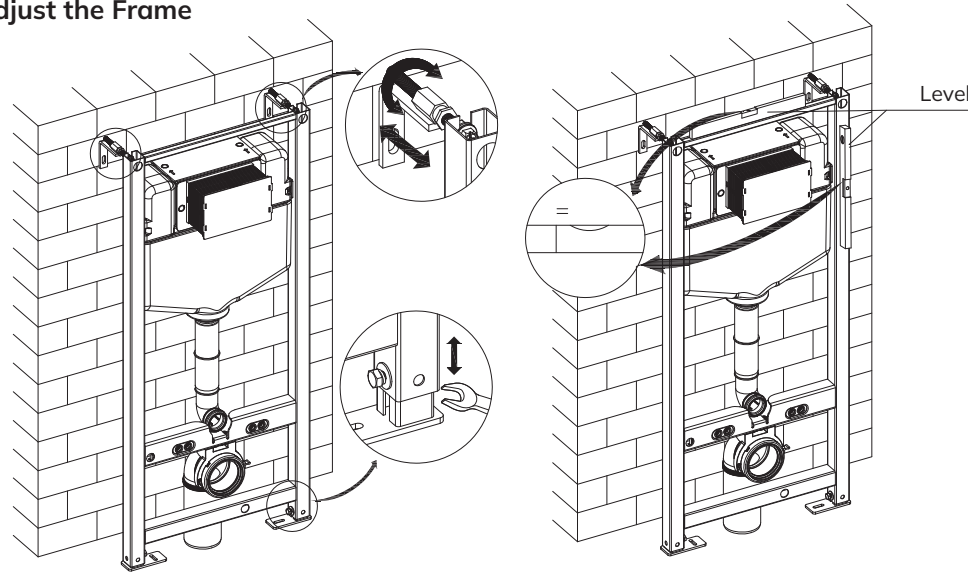
A  
Position on the wall



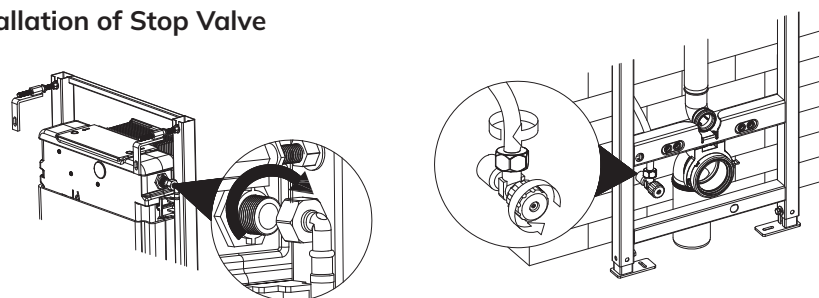
B  
Position on the floor



## Adjust the Frame

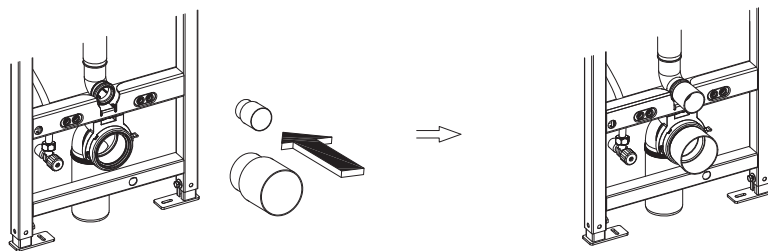


## Installation of Stop Valve

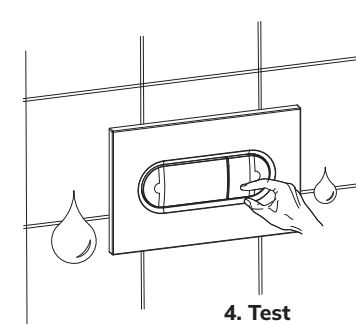
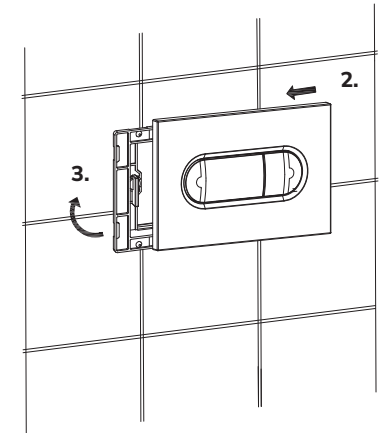
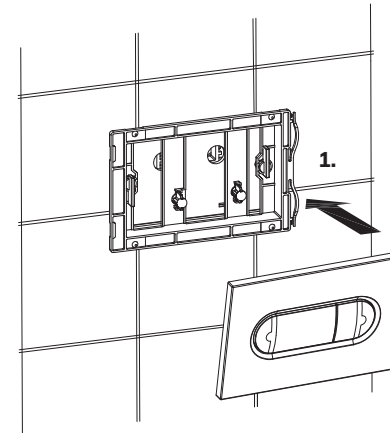


Connect the Flexible Hose to the Stop Valve

## Installation of Bungs

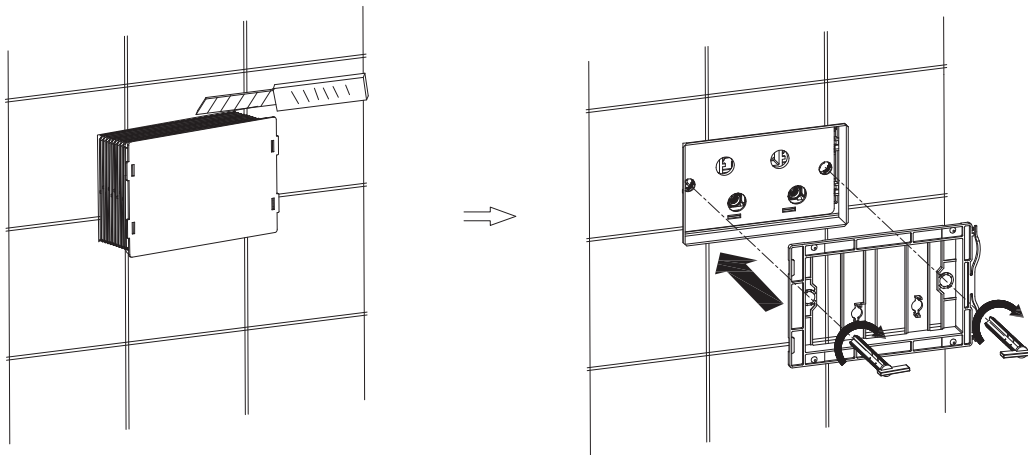


## Installation of Flush Plate



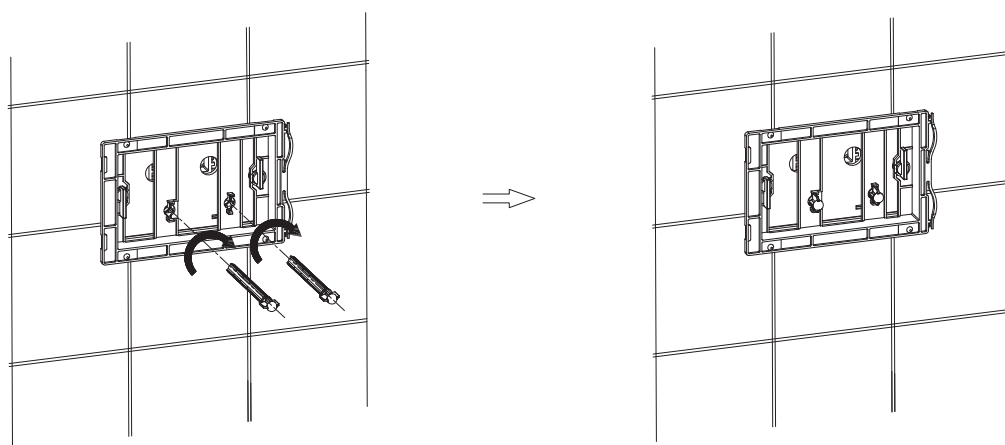
4. Test

## Installation of Flush Plate Base



Using a craft knife, cut the protective casing so that it is flush with the wall

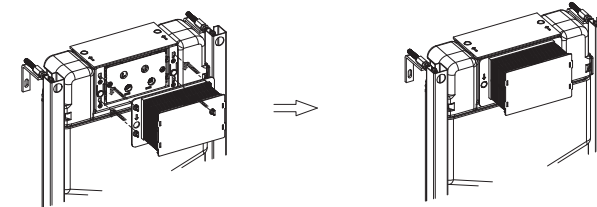
Fix the flush plate mounting bracket



Fix the plastic fixing arms

## Installation of Protective Case

### Front Mounting

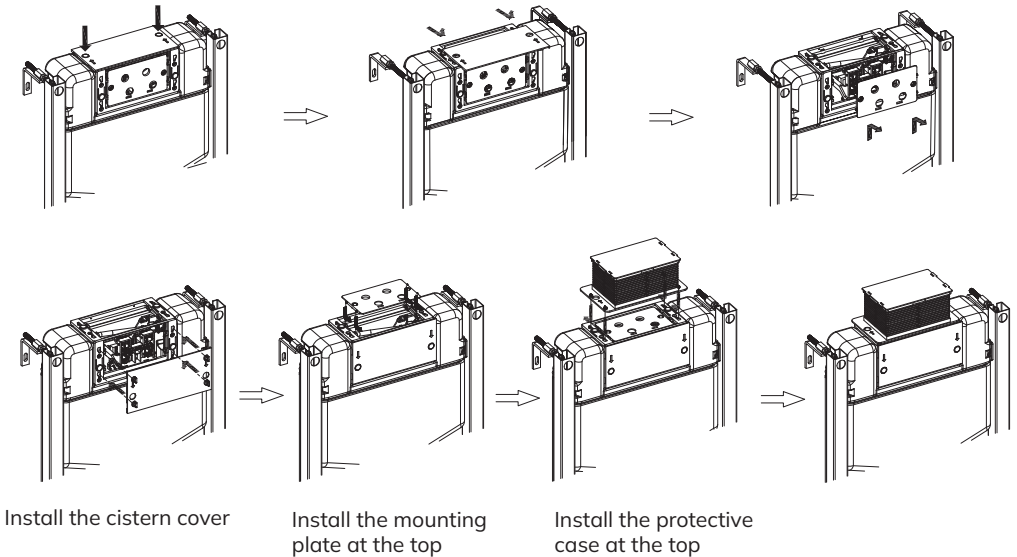


### Top Mounting

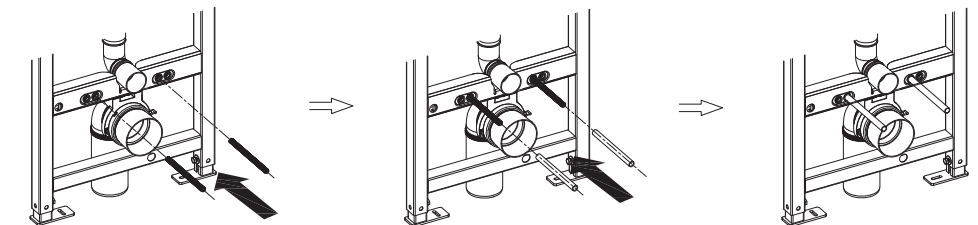
Press down on these two cylinders

Remove the cistern cover

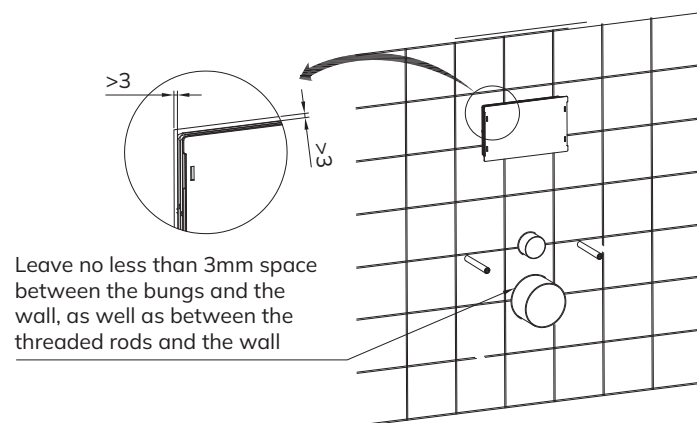
Lift up and pull back to remove the mounting plate



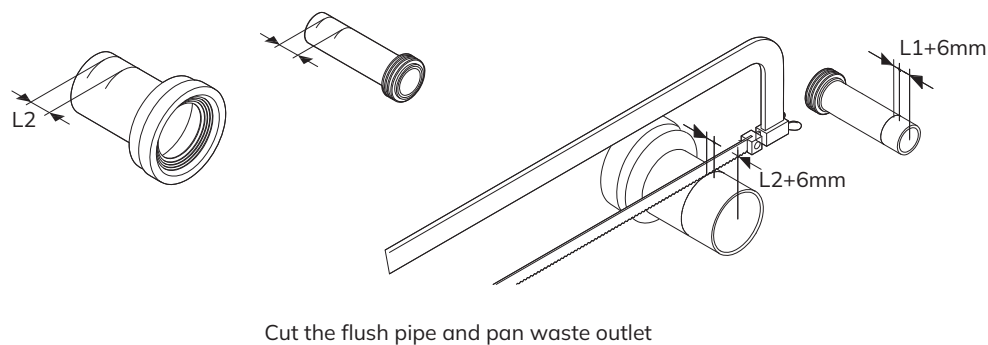
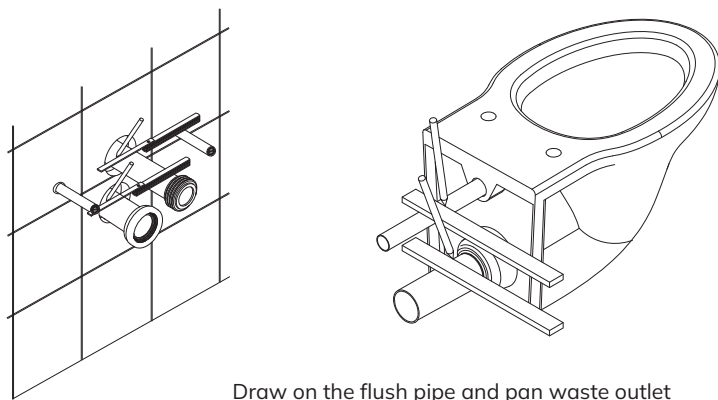
## Installation of Threaded Rods and Flexible Sheaths



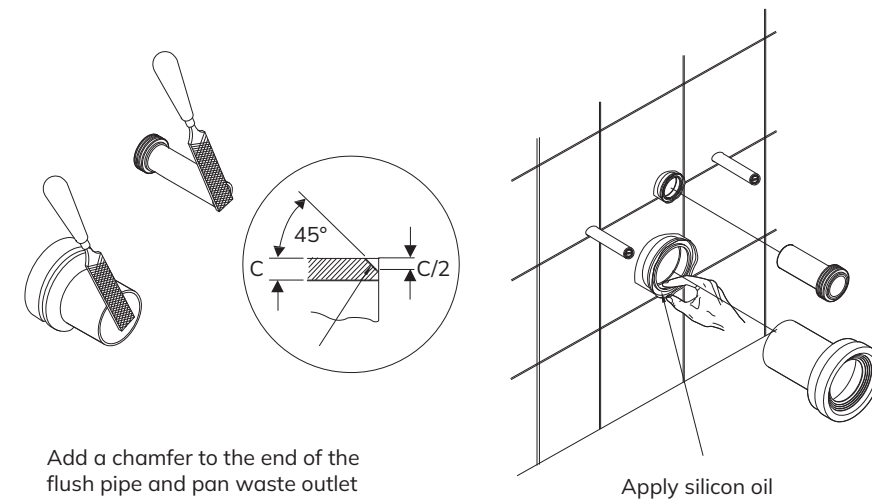
## Build the Partition Wall



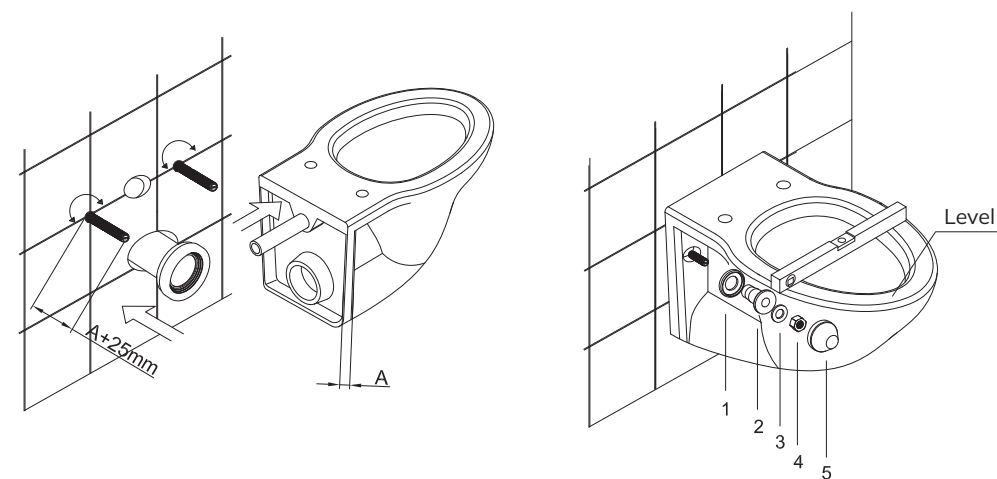
## Installation of Wall-hung Toilet



5



## Fixing of the Toilet



Push the trimmed pipes into position as shown and check that they are secure. Remove the protective flexible sheaths from the threaded rods and adjust the threaded rods.

Position the toilet taking care that the connecting pipes are well aligned to prevent leaks. Use a spirit level to make sure the toilet is level and then fix to the rods with the supplied fixings in the order shown above

6