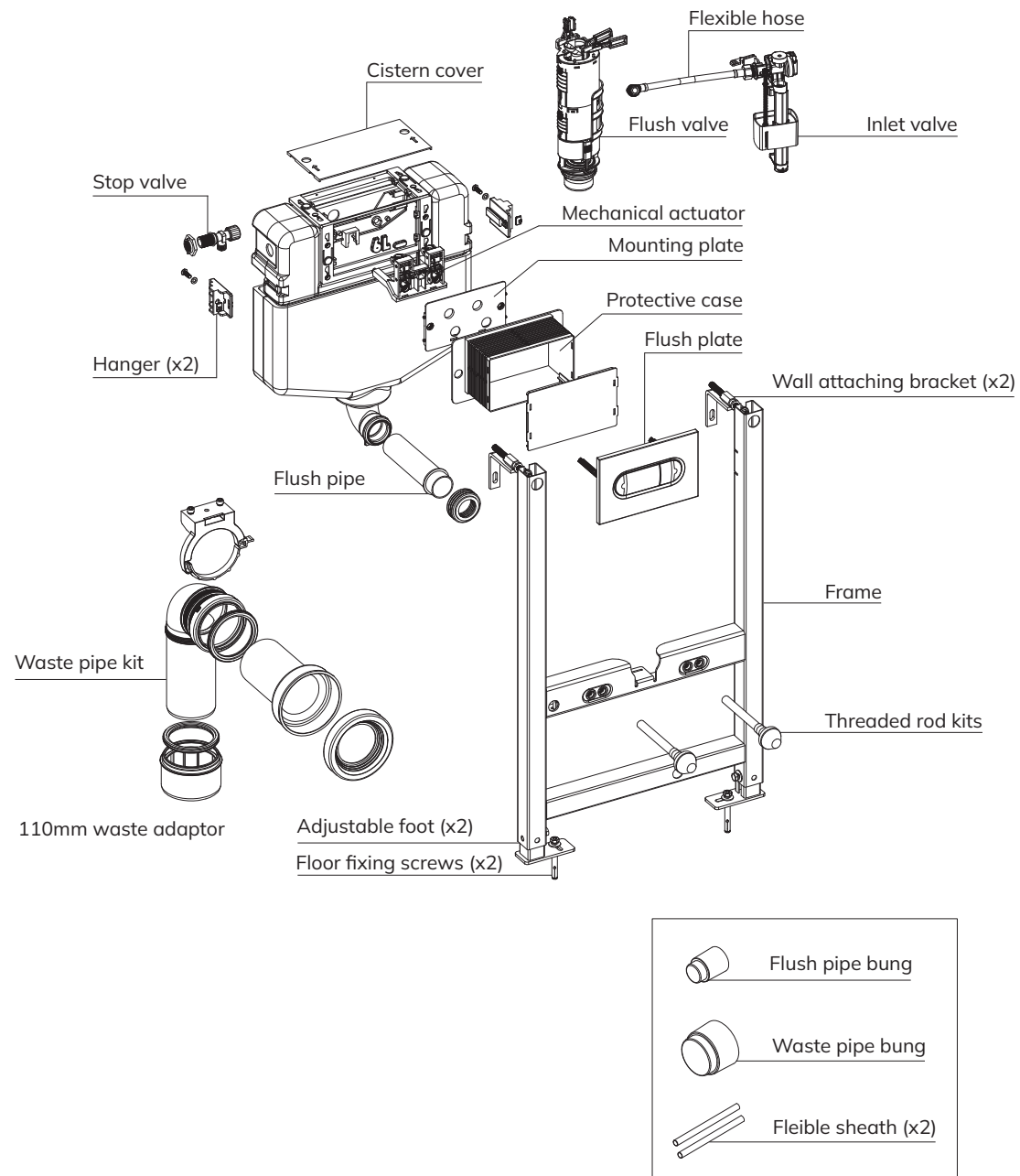
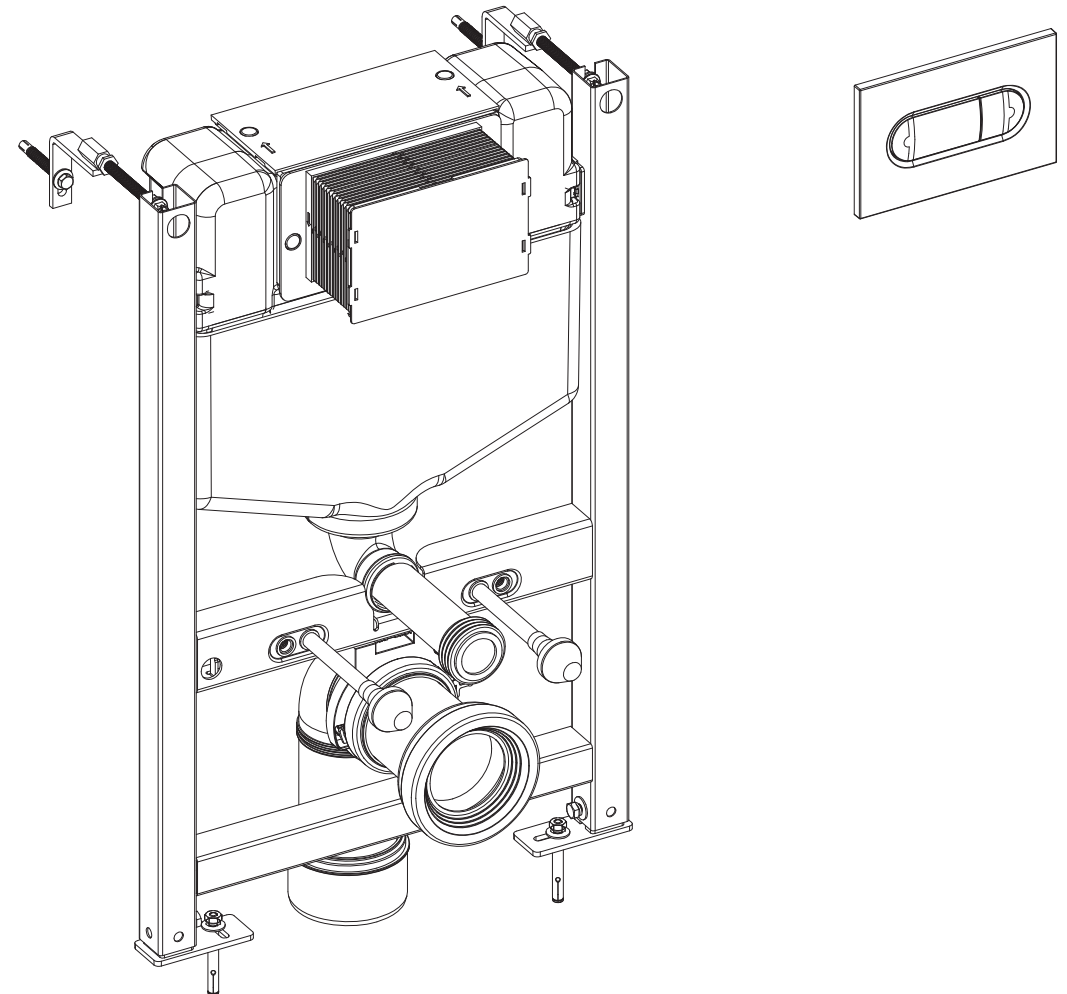


Spare Parts



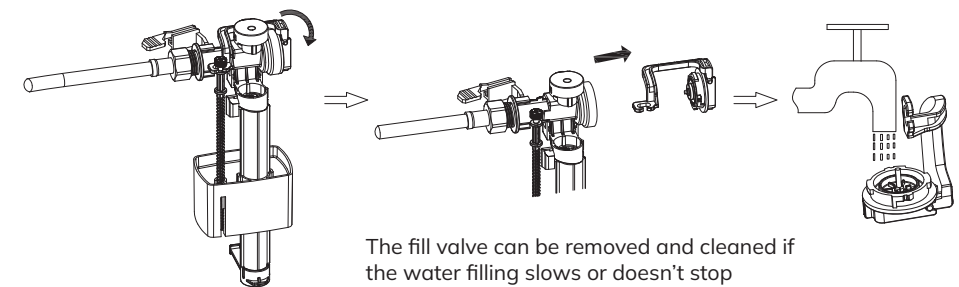
SONAS 820MM UNIVERSAL FRAME AND CISTERN FOR WALL HUNG WC



USW0547

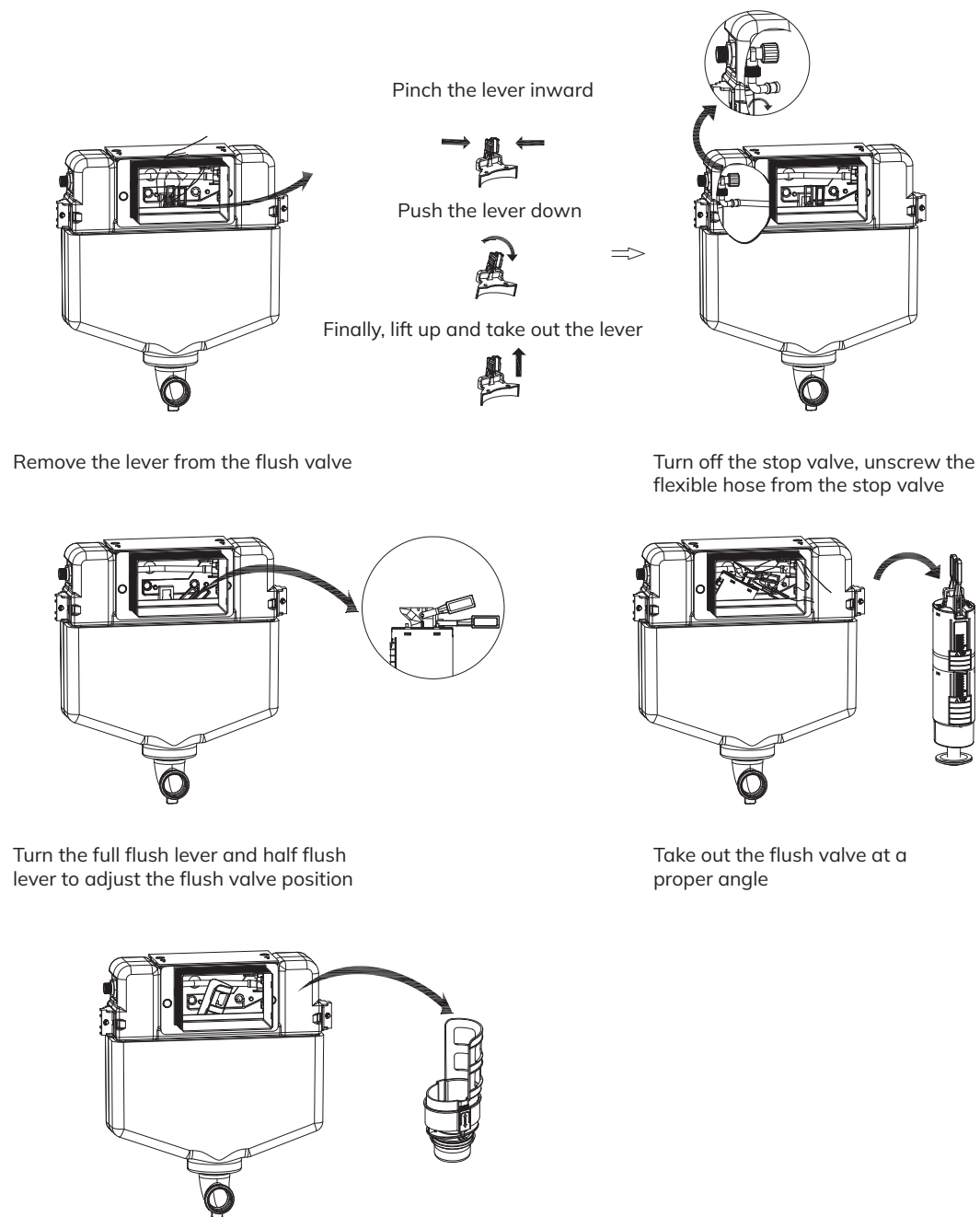
Adjust Water Level of Fush Valve

Top Mounting



10

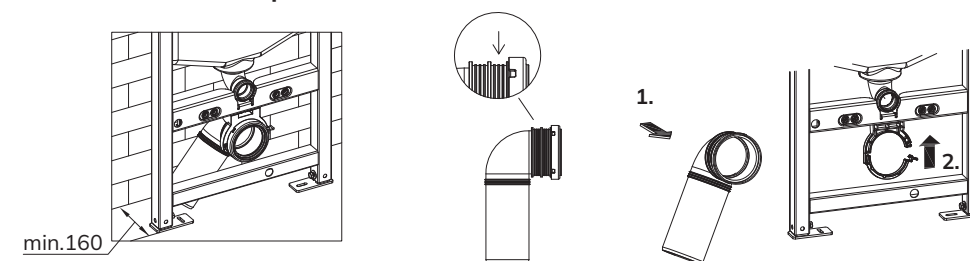
Maintenance of the Cistern Fittings



9

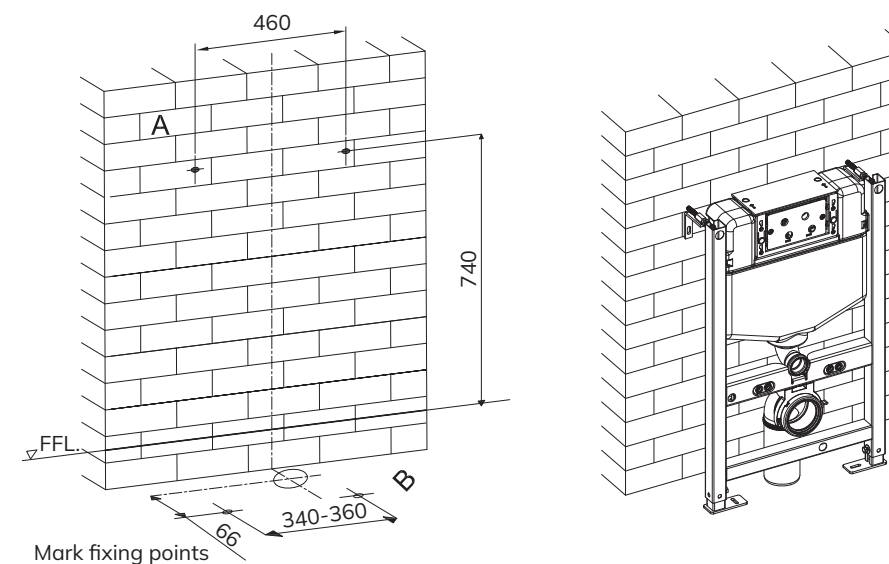
Take out flush valve base

Installation of Waste Pipe

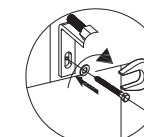
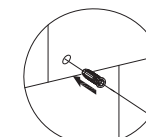


Allow at least 160mm of installation space between the wall and the wall-hung frame

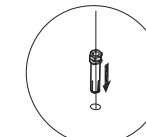
Installation of Wall-hung Frame



A
Position on the wall

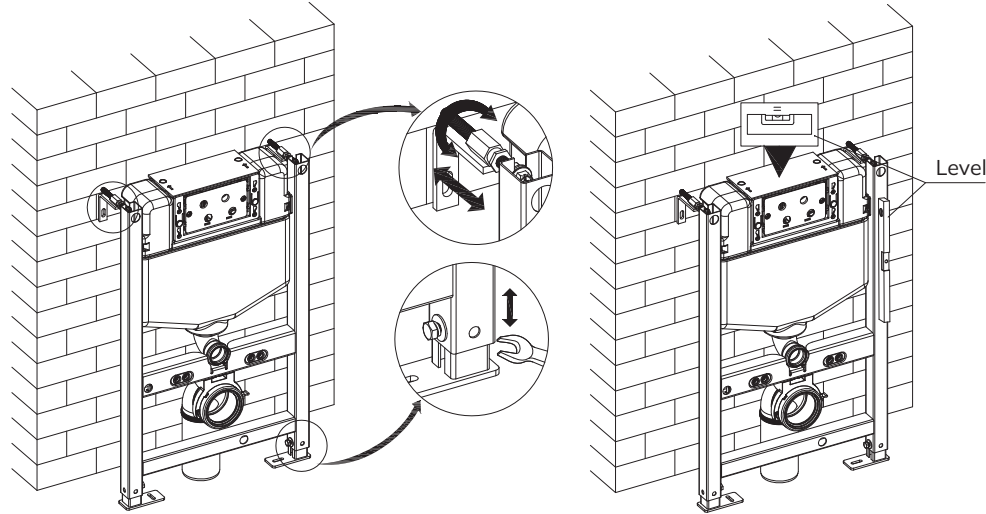


B
Position on the floor



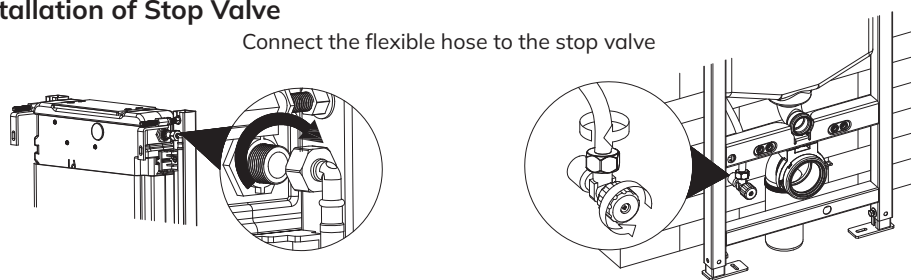
2

Adjust the Frame



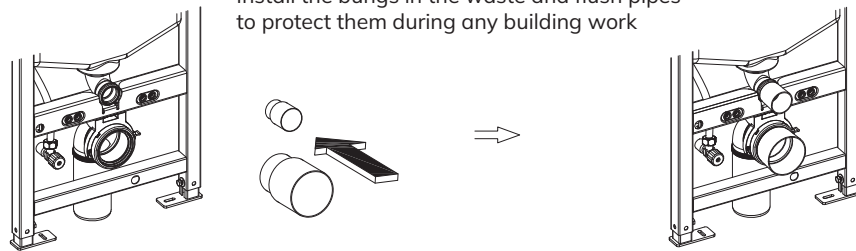
Installation of Stop Valve

Connect the flexible hose to the stop valve

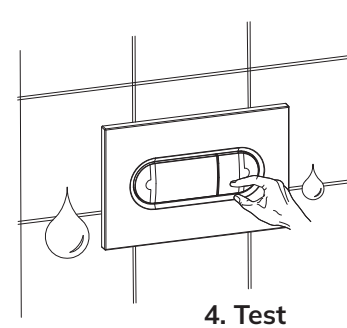
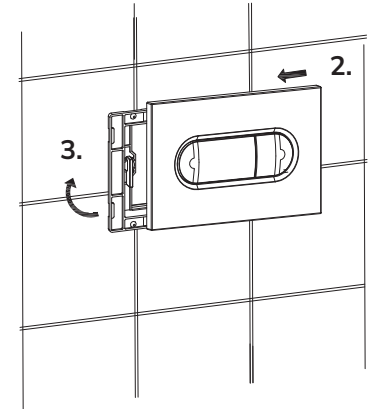
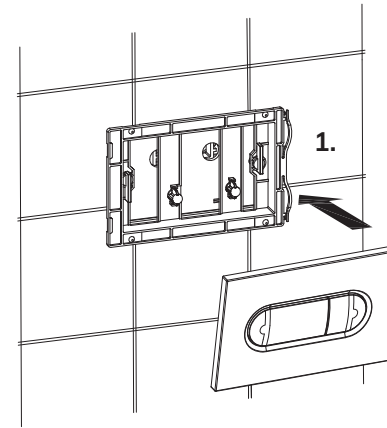


Installation of Bungs

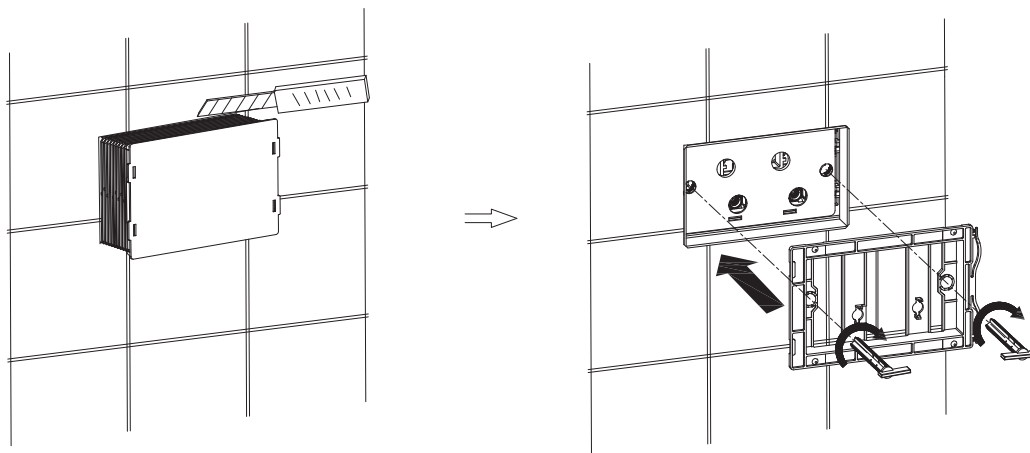
Install the bungs in the waste and flush pipes to protect them during any building work



Installation of the Flush Plate

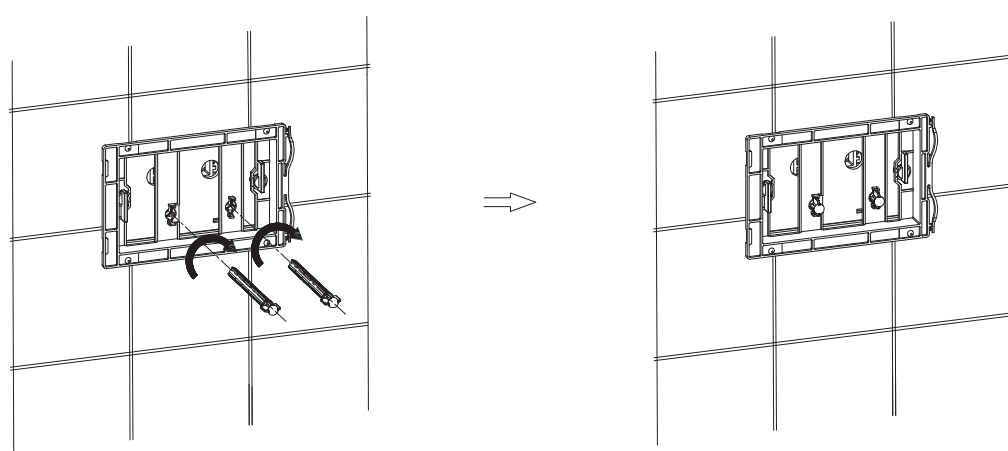


Installation of Flush Plate Base



Using a craft knife, cut the protective casing so that it is flush with the wall

Fix the flush plate mounting bracket

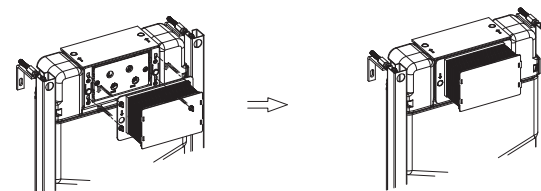


Fix the plastic fixing arms

7

Installation of Protective Case

Front Mounting

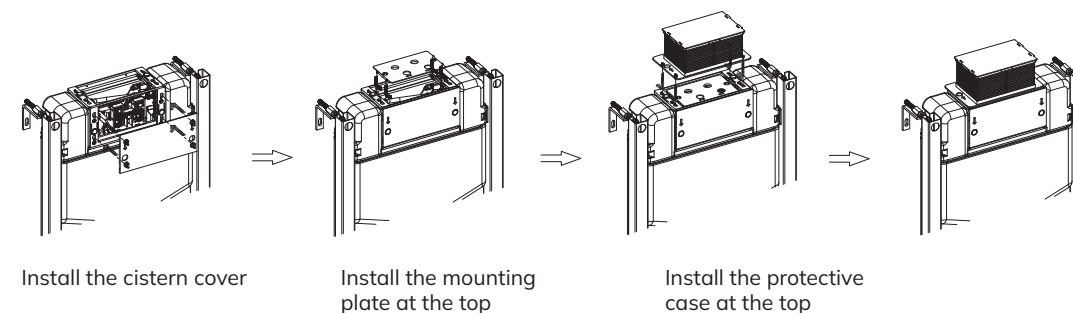
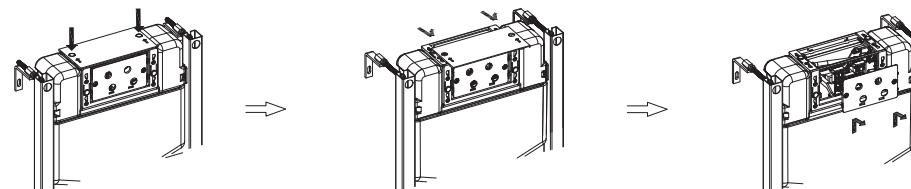


Top Mounting

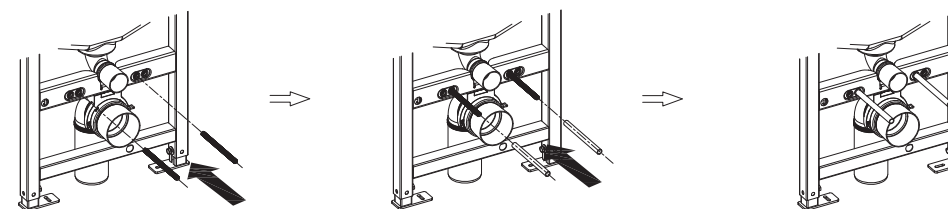
Press down these two cylinders

Remove the cistern cover

Lift up and pull back to remove the mounting plate

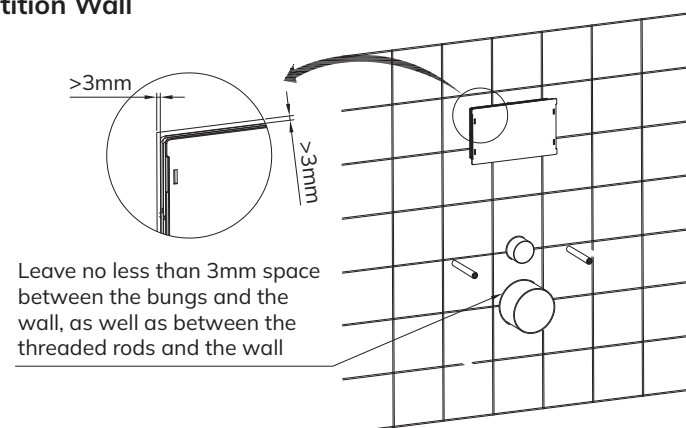


Installation of Threaded rods and Flexible Sheaths

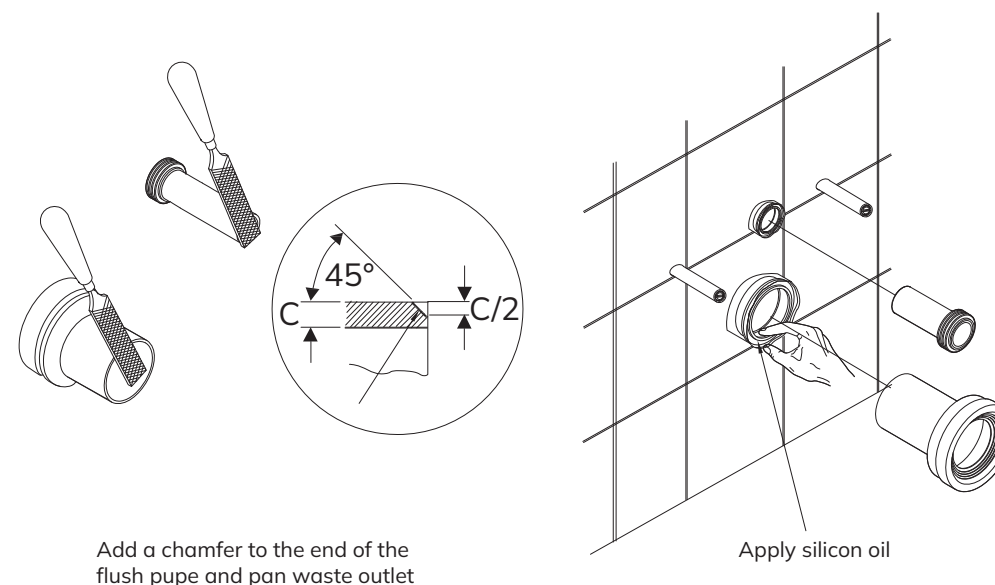
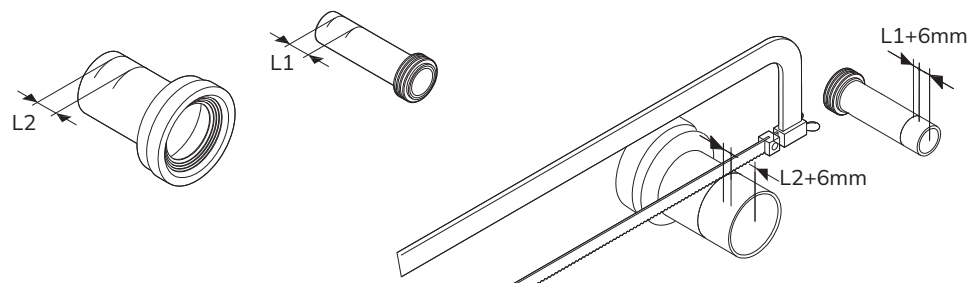
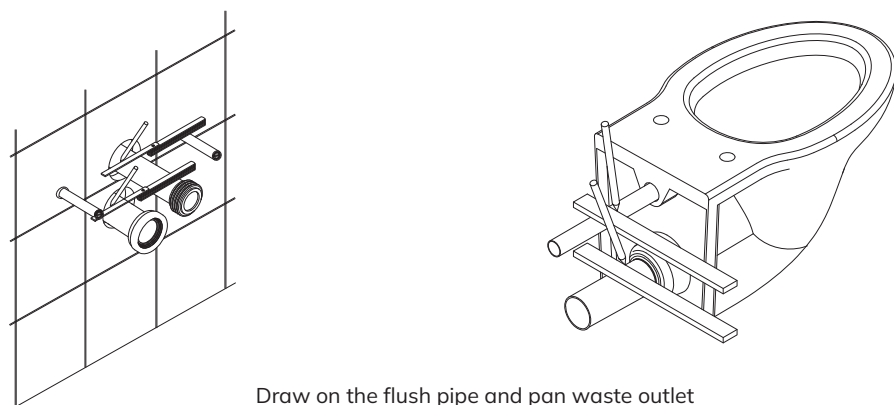


4

Build the Partition Wall



Installation of Wall-hung Toilet



Fixing of the Toilet

