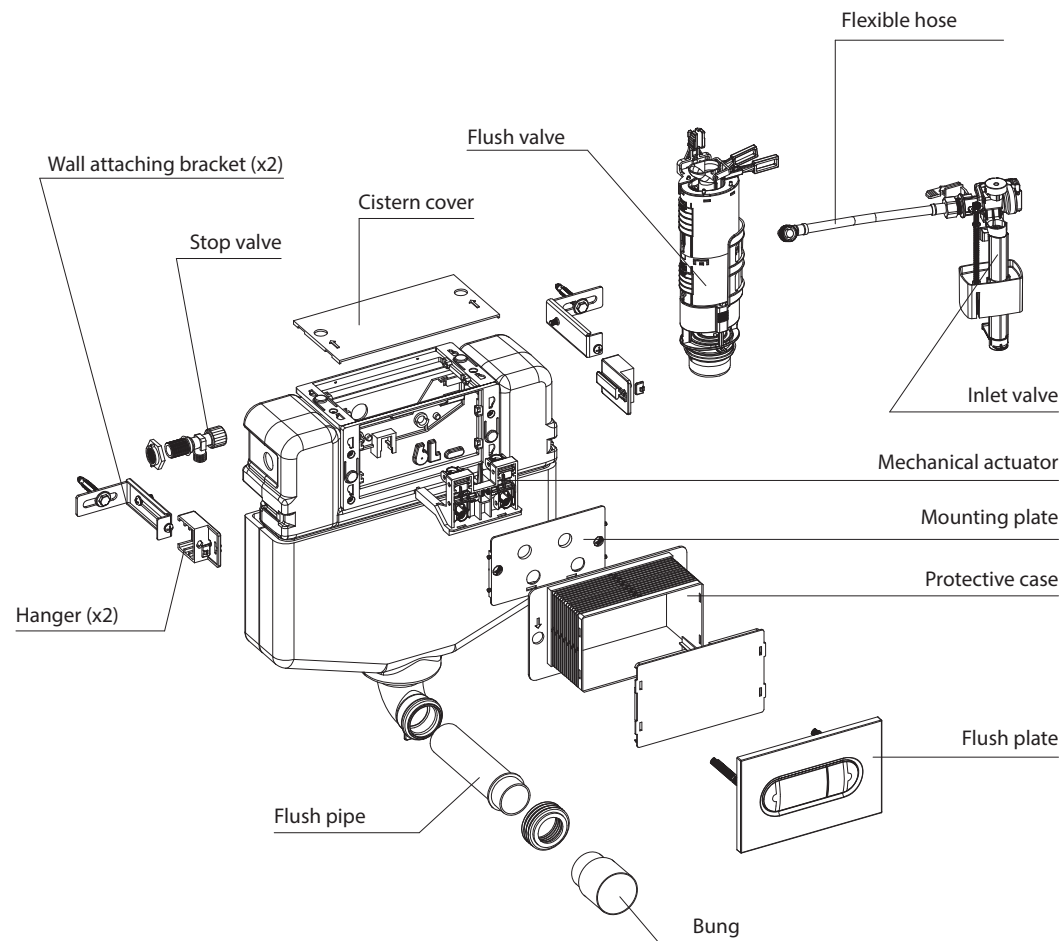
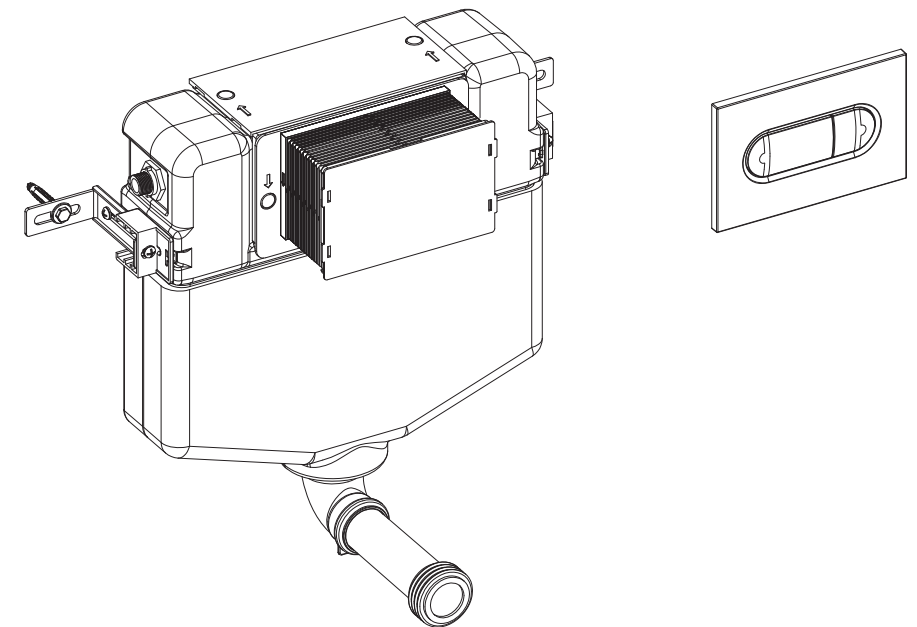


Spare Parts

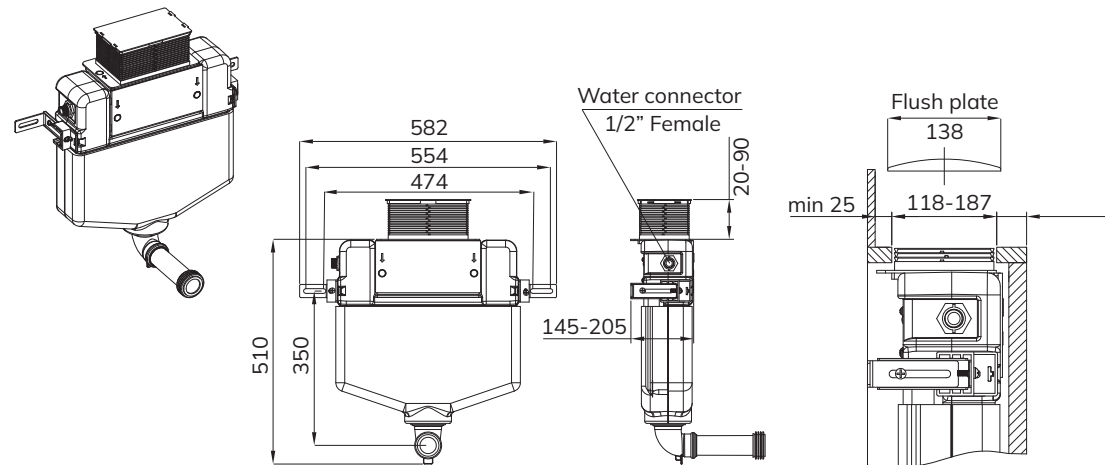


SONAS CONCEALED CISTERN FOR BACK TO WALL WC

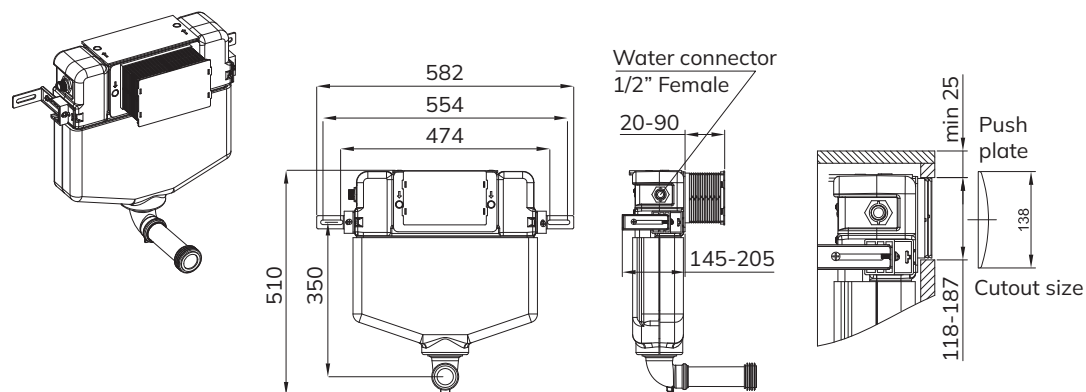


USW0546

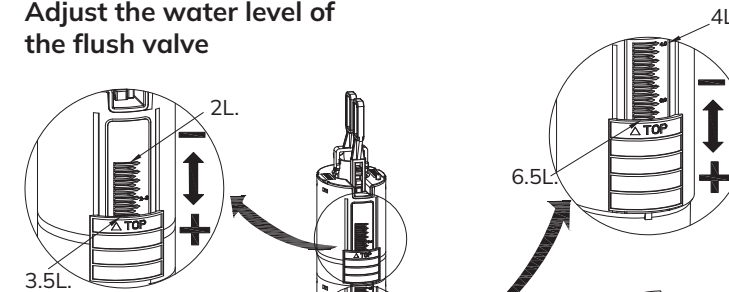
Dimensions Top Mounting



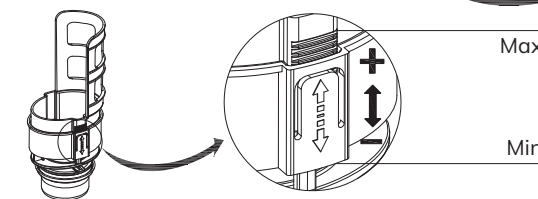
Front Mounting



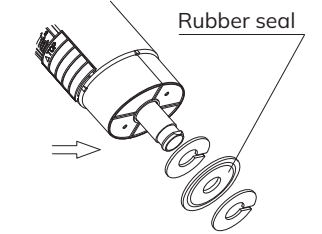
Adjust the water level of the flush valve



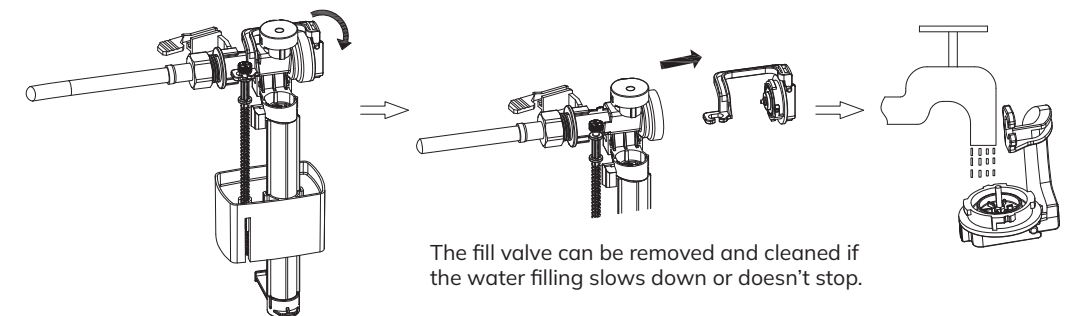
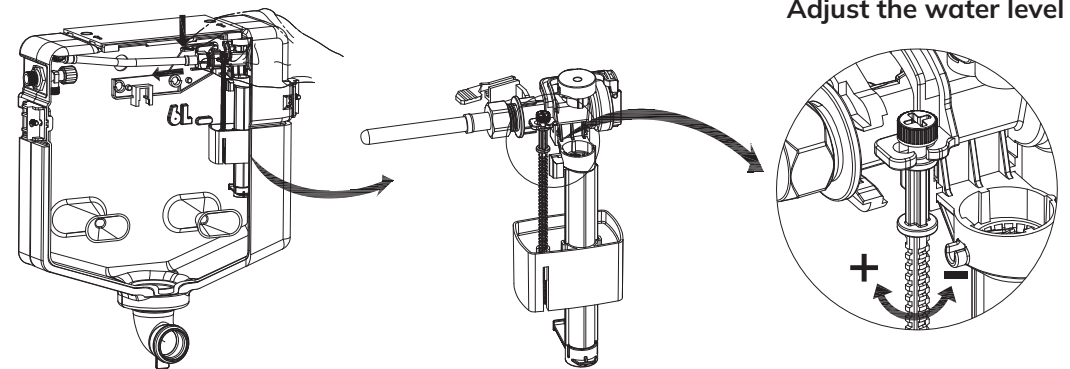
Adjust the flush volume



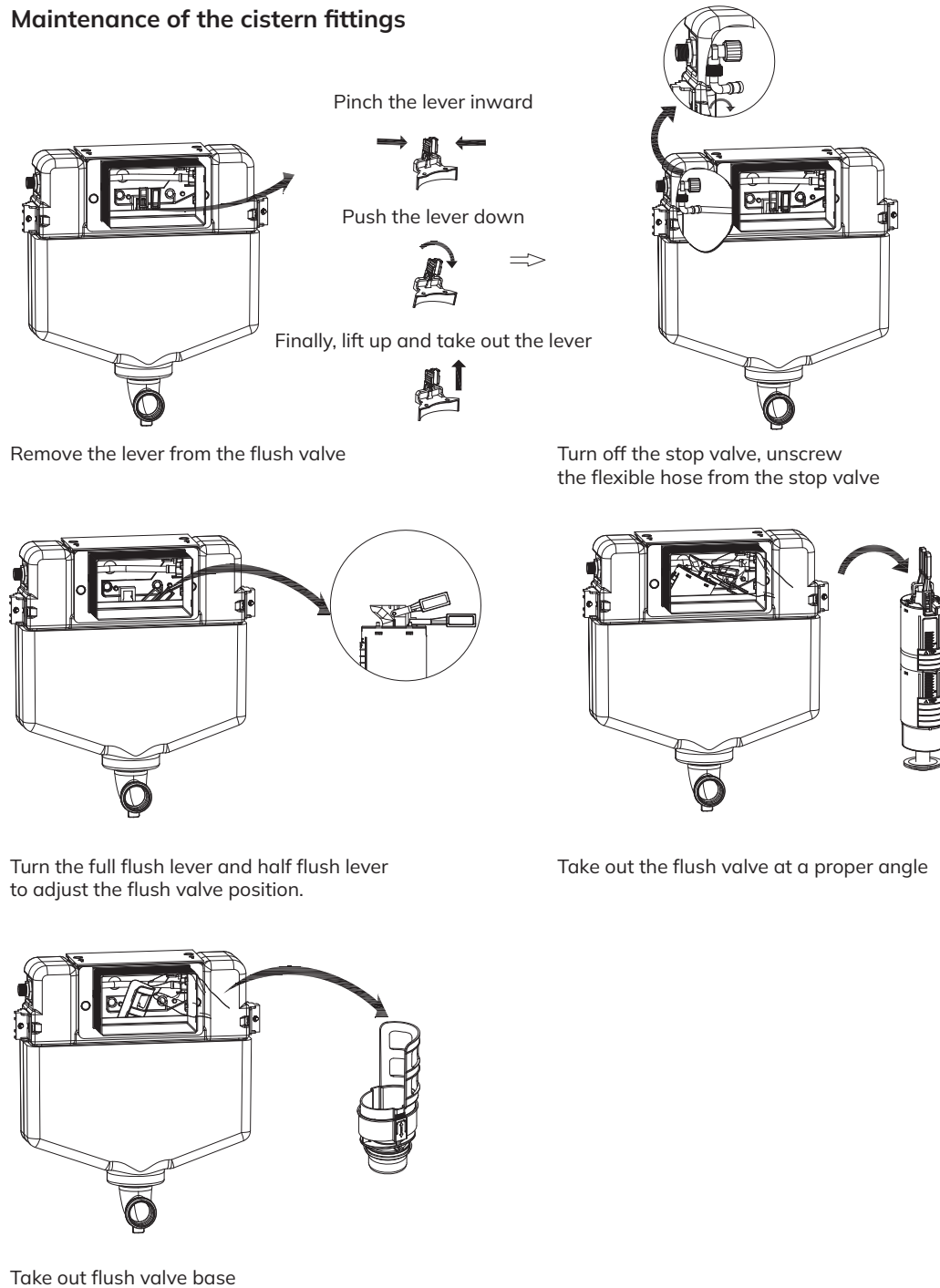
Rubber seal maintenance



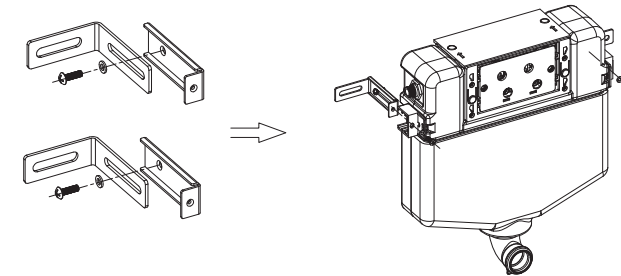
Adjust the water level



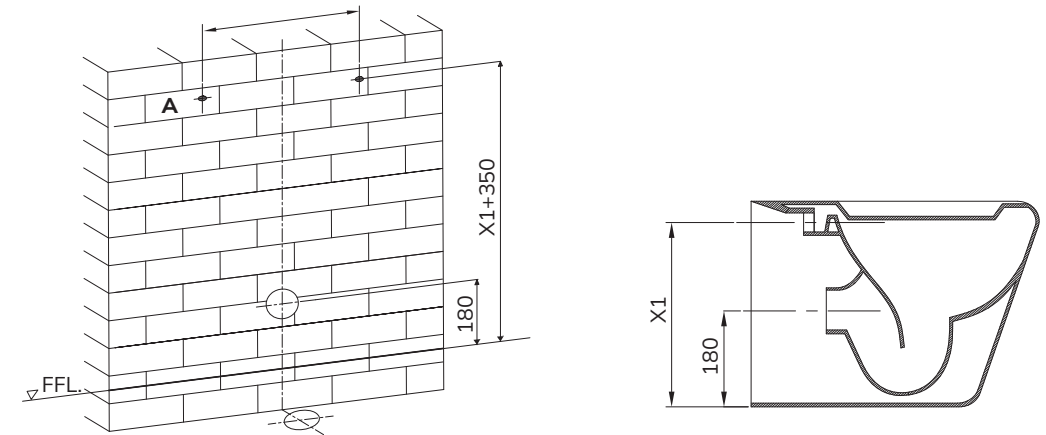
Maintenance of the cistern fittings



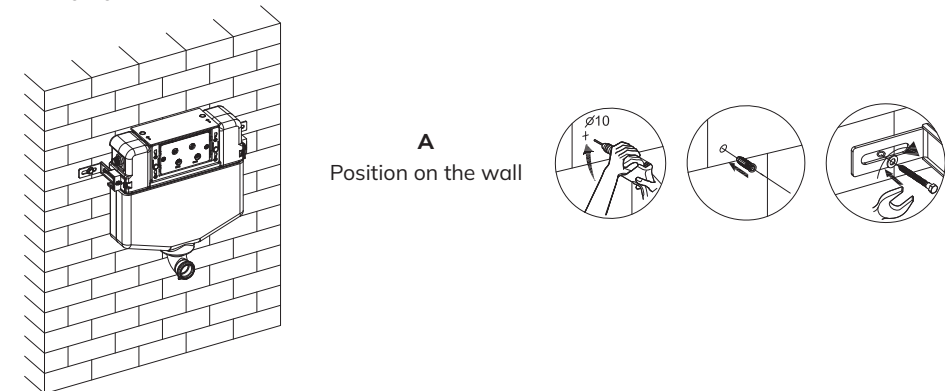
Installation of wall attaching brackets



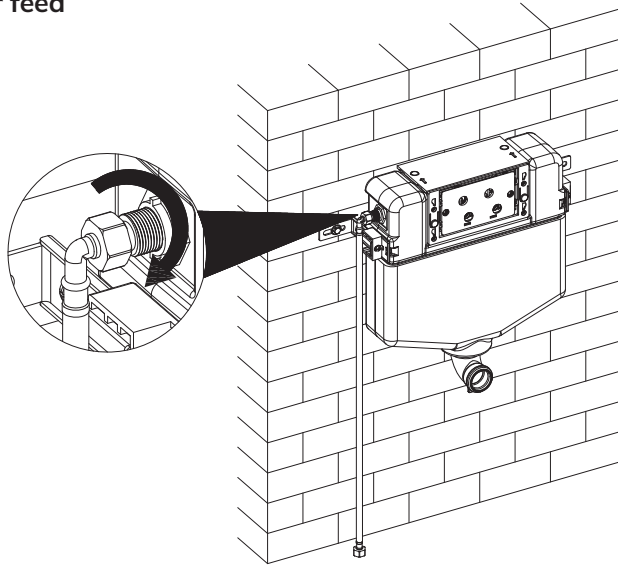
Mark fixing points



Drill and fix

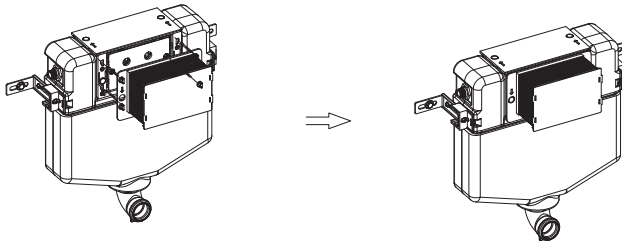


Connect the water feed



Installation of protective case

Front Mounting

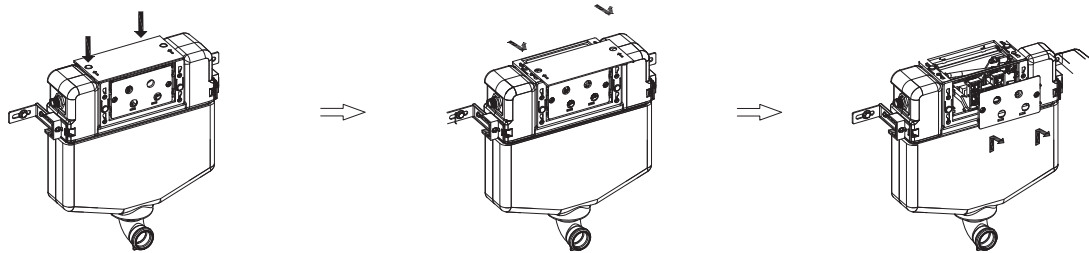


Top Mounting

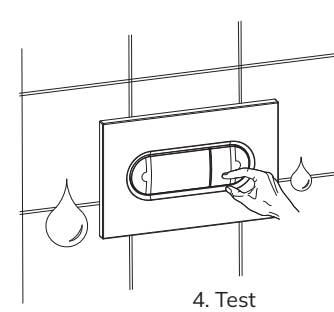
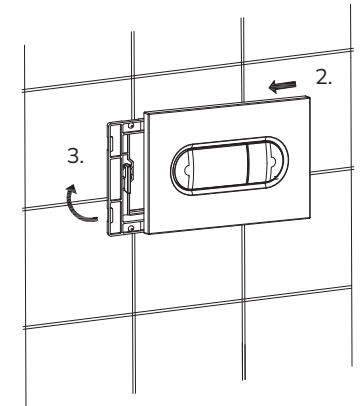
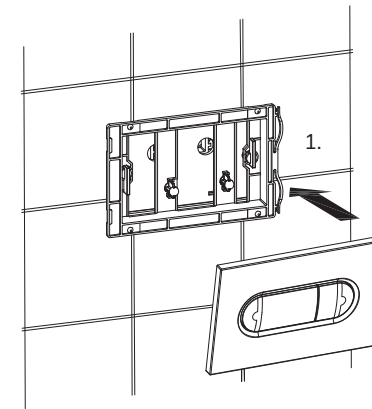
Press down on these two cylinders

Remove the cistern cover

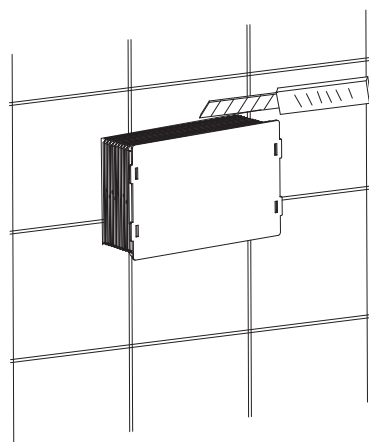
Lift up and pull back to remove the mounting plate



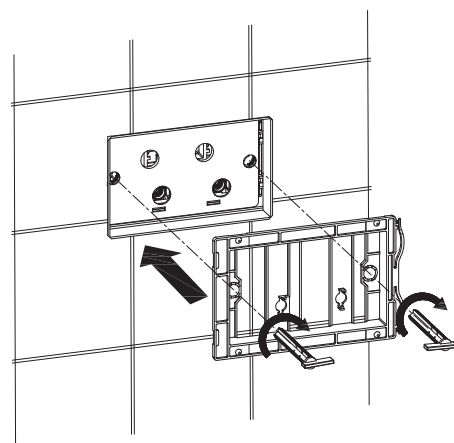
Installation of the flush plate



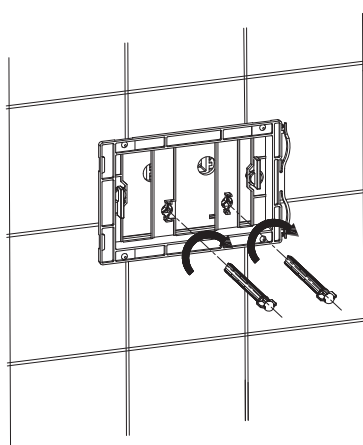
Installation of flush plate base



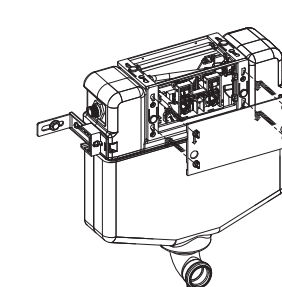
Using a craft knife, cut the protective casing so that it is flush with the wall.



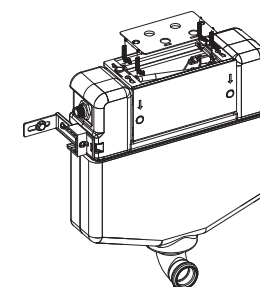
Fix the flush plate mounting bracket



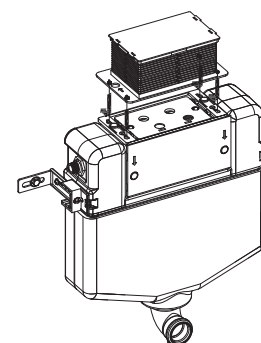
Fix the plastic fixing arms



Install the cistern cover



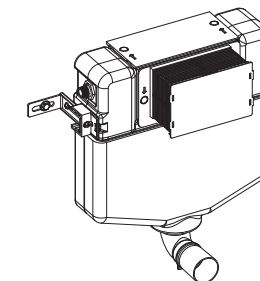
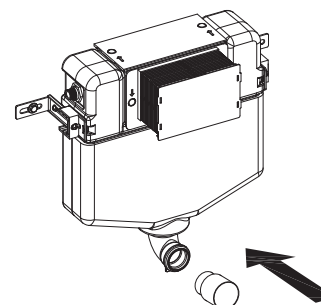
Install the mounting plate at the top



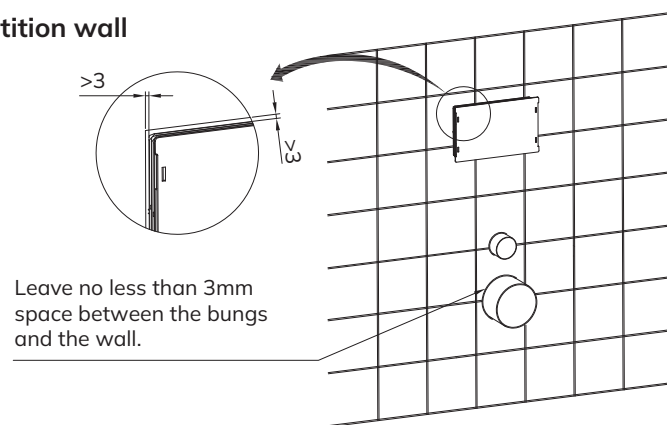
Install the protective case at the top



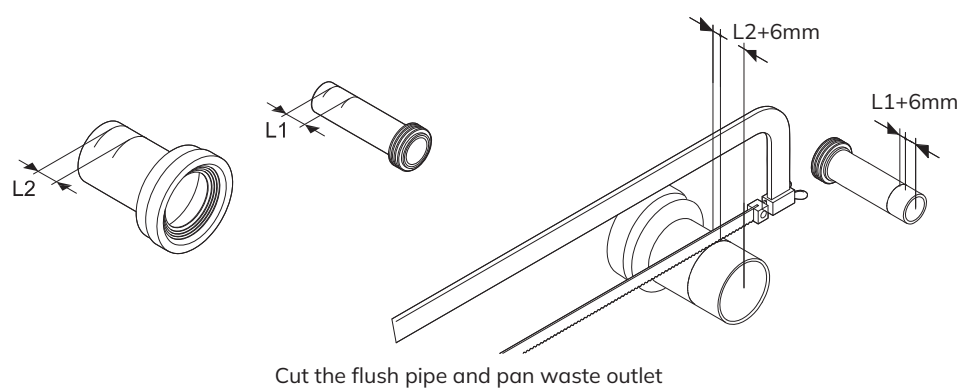
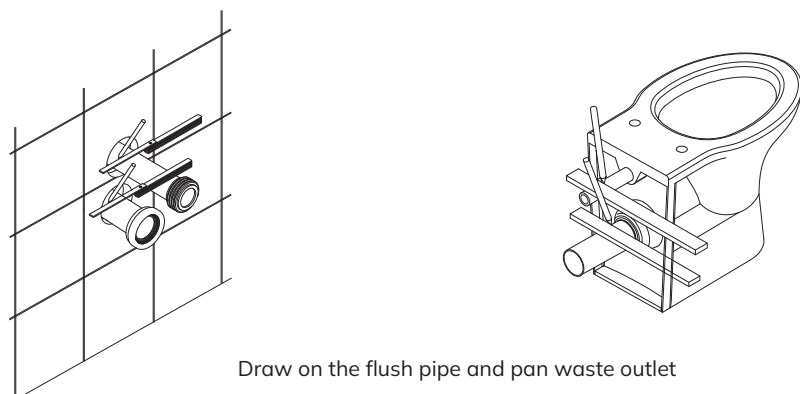
Installation of bung



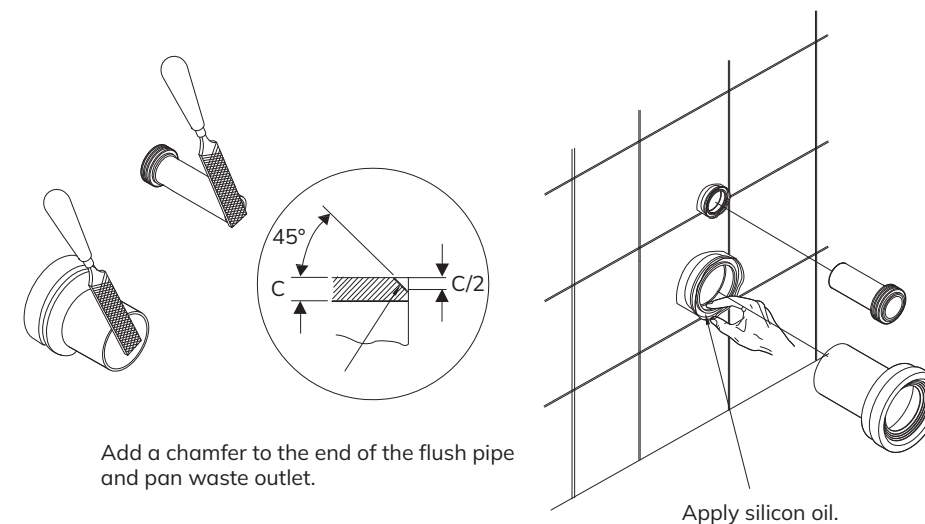
Build the partition wall



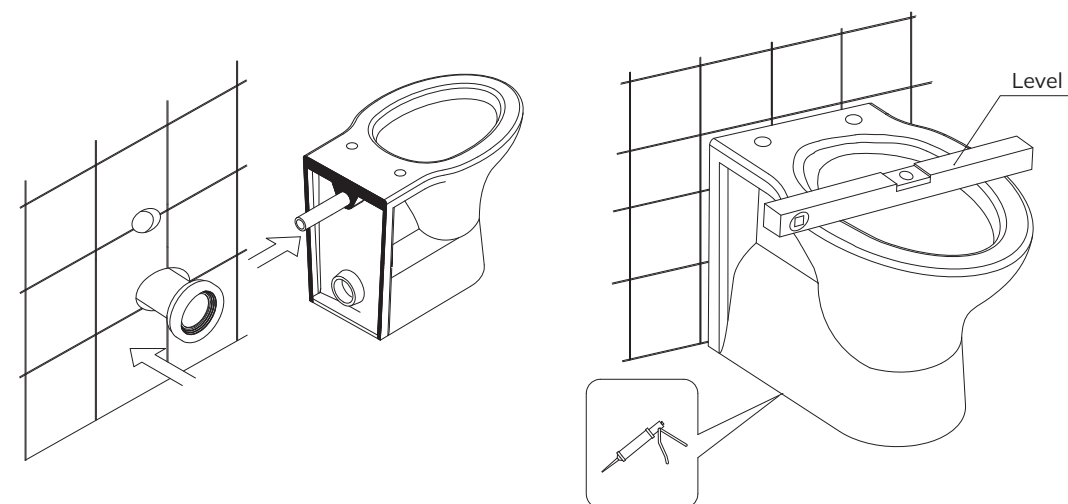
Installation of the toilet



5



Fixing the toilet



Push the trimmed pipes into position as shown and check that they are secure.

Use a spirit level to make sure the toilet is level, and then apply the glue around the bottom of the toilet.

6