



ROCKWOOL SCB

Sleeved Cavity Barrier for masonry, timber and steel-framed constructions

ROCKWOOL SCB consists of stone wool insulation strips encapsulated in a protective polythene sleeve. Fitted under compression, the product acts to inhibit the passage of smoke and fire within masonry, timber and steel frame constructions.

- Satisfies the definition and minimum performance requirements of a cavity barrier, as per the relevant guidance in England, Wales, Scotland, Northern Ireland, and the Republic of Ireland.
- Can support in reducing air leakage and heat loss.
- Flexible cavity closer reduces acoustic flanking transmission.
- Suitable for use both vertically and horizontally.
- Weather-resistant polythene sleeve.



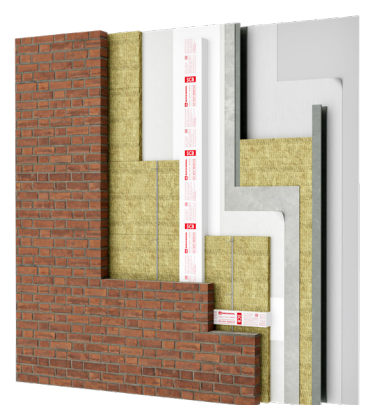
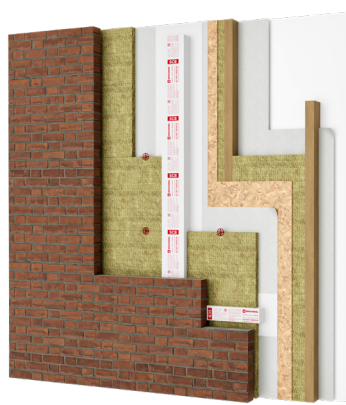
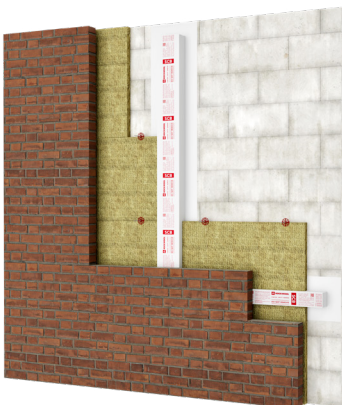
ROCKWOOL SCB



APPLICATIONS

ROCKWOOL SCB is suitable for cavities between a masonry outer leaf and the following substrate types:

- Masonry
- Timber frame faced with OSB
- Steel frame faced with cement particle board



For closing the junction between a party wall and the external cavity, SCB is available in a larger 200mm width.

ROCKWOOL SCB

PERFORMANCE

Fire performance

ROCKWOOL SCB has been tested in accordance with BS EN 1366-4:2021 "Fire resistance tests for service installations - Linear joint seals".

For full performance data, please refer to the UL Classification Report linked below:

[UL Classification Report No. 4791060701.1-01 >](#)

Acoustic performance

SCB is a flexible closer consisting of acoustically absorbent stone wool insulation which will help to reduce flanking transmission through cavities.

Thermal performance

When used to close the junction between a party wall and the external cavity, the product creates an effective perimeter edge seal, which reduces heat loss by restricting air flow around the exposed edges of the party wall cavity.

PRODUCT INFORMATION

Property	Description
Length	1200mm
Width	110mm or 200mm (Application dependent)
Thickness	Cavity depth plus 10mm (min.)
To suit cavity sizes	50mm – 290mm
Fire resistance	Up to EI 120/45*

*Subject to application; see UL Report [REF] for details.

STANDARDS AND APPROVALS

Certificate
ROCKWOOL SCB has been tested in accordance with BS EN 1364-4:2021 and classified to BS EN 13501-2.
ROCKWOOL SCB satisfies the definition and minimum performance requirement of a cavity barrier as featured guidance applicable in England, Wales, Scotland, Northern Ireland, and the Republic of Ireland.
ROCKWOOL SCB complies with the requirements for cavity barriers contained within I.S. 440: 2009+A1:2014 "Timber Frame Construction, Dwellings and other Buildings".

ROCKWOOL SCB

INSTALLATION

SCB should be sized at least 10mm greater than the cavity depth to ensure a tight compressive fit.

The product features plastic wings which should be fixed to the substrate using clout nails or staples to assist with placement during installation.

All joints between adjacent cavity barriers and intersections should be tightly butted to ensure a continuous seal.

SCB should be used to close the head of cavity walls at eaves level.

SPECIFICATION CLAUSES

ROCKWOOL SCB is associated with the following NBS specification clauses:

F30 Accessories/sundry items for brick/block stone walling
180 Cavity Closers
K10 Gypsum board dry linings/partitions/ceilings
530 Cavity barriers within partitions/wall linings
P10 Sundry insulation/proofing work
420 Sleeved mineral wool small cavity barriers

LEGAL NOTICES

General safety requirements – Building Safety Act 2022

ROCKWOOL Limited is committed to supporting specifiers, resellers and users of ROCKWOOL products for the full life cycle of the product to comply with the obligations and responsibilities set out in the Building Safety Act 2022. With regard to the general safety requirements of the Act, ROCKWOOL Limited cannot control or foresee every situation where its products might be used. We therefore strongly advise that specifiers, resellers and users contact us where use of ROCKWOOL products is contemplated in applications different from those explicitly described in the latest, relevant ROCKWOOL product datasheets; especially in applications that can be reasonably foreseen as critical to safety.

ROCKWOOL Limited reserves the right to amend the specification of its products without notice. Changes to the ROCKWOOL manufacturing process, or to pertinent regulations, may be reflected in changes to tested and certified product performance. Whilst ROCKWOOL Limited endeavours to keep its publications up to date, readers will appreciate that between publications there may be pertinent changes in the law or other developments affecting the accuracy of the information contained in our publications.

ROCKWOOL Limited does not accept responsibility for the consequences of using (including testing or certifying) its products in applications different from those explicitly described in the relevant ROCKWOOL product datasheets. Expert advice should be sought, and ROCKWOOL Limited should be contacted, where such different use is contemplated, or where the extent of any use described by ROCKWOOL Limited is in doubt.

The ROCKWOOL Trademark

ROCKWOOL® - our trademark

The ROCKWOOL trademark was initially registered in Denmark as a logo mark back in 1936. In 1937, it was accompanied with a word mark registration; a registration which is now extended to more than 60 countries around the world.

The ROCKWOOL trademark is one of the most important assets of the ROCKWOOL Group, and is therefore well-protected and defended by ROCKWOOL throughout the world.

If you require permission to use the ROCKWOOL logo for your business, advertising or promotion, you must apply for a Trade Mark Usage Agreement.

To apply, write to:
marketcom@rockwool.com

Trademarks

Registered trademarks of the ROCKWOOL Group include but are not limited to:

ROCKWOOL®, RockClose®, RainScreen Duo Slab®, HardRock®, RockFloor®, Flexi®, RockFall®, FirePro®, DuctRock®, BeamClad®, NyRock®

© ROCKWOOL 2024.
All rights reserved.

Photography and illustrations

The product illustrations are the property of ROCKWOOL Limited and have been created for indicative purposes only.

Unless indicated below, the photography and illustrations used in this guide are the property of ROCKWOOL Limited. We reserve all rights to the usage of these images.

If you require permission to use ROCKWOOL images, you must apply for a Usage Agreement.

To apply, write to:
marketcom@rockwool.com

HEALTH & SAFETY

A Material Safety Data Sheet is available and can be downloaded from www.rockwool.com/uk to assist in the preparation of risk assessments, as required by the Control of Substances Hazardous to Health Regulations (COSHH)

ROCKWOOL SCB

ROCKWOOL stone wool - safe to install and live alongside

There are no hazardous classifications associated with stone wool insulation manufactured by ROCKWOOL-UK according to EU REACH and UK REACH regulations on health and the environment.

ROCKWOOL safe use instruction sheets and material safety data sheets (where applicable) can be downloaded [here](#).



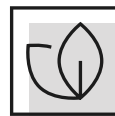
Sustainability

ROCKWOOL products are used to enrich modern living, creating safer, healthier and more climate-resilient communities.

We transform abundant, natural volcanic rock into stone wool insulation products that are used to reduce energy demand, lower fuel bills and help address society's climate change challenges.

ROCKWOOL stone wool insulation is recyclable and can be transformed into new ROCKWOOL products. Please contact us for details of how we can work together to recycle waste ROCKWOOL stone wool material that may be generated during on-site installation.

Our annual sustainability reports, which set out progress against our sustainability goals, and further details of the positive impacts of using our products can be found on our website.



Environment

ROCKWOOL takes a fact-based, auditable approach to documenting our progress in maximising our products' positive impact and minimising the effect our operations have on the environment, backed by third-party references and methodologies. Further details can be found online in our annual sustainability report.

Our high-tech production process uses filters, pre-heaters, after-burners and other cleaning and collection systems that help to reduce the effects of our manufacturing operations on the environment.

ROCKWOOL stone wool insulation does not contain (and has never contained) gases that have ozone depletion potential (ODP) or global warming potential (GWP).

